



SPEC® CINT2006 Result

Copyright 2006-2014 Standard Performance Evaluation Corporation

Hewlett-Packard Company

SPECint®2006 = **65.7**

ProLiant DL380 Gen9
(2.60 GHz, Intel Xeon E5-2697 v3)

SPECint_base2006 = **63.1**

CPU2006 license: 3

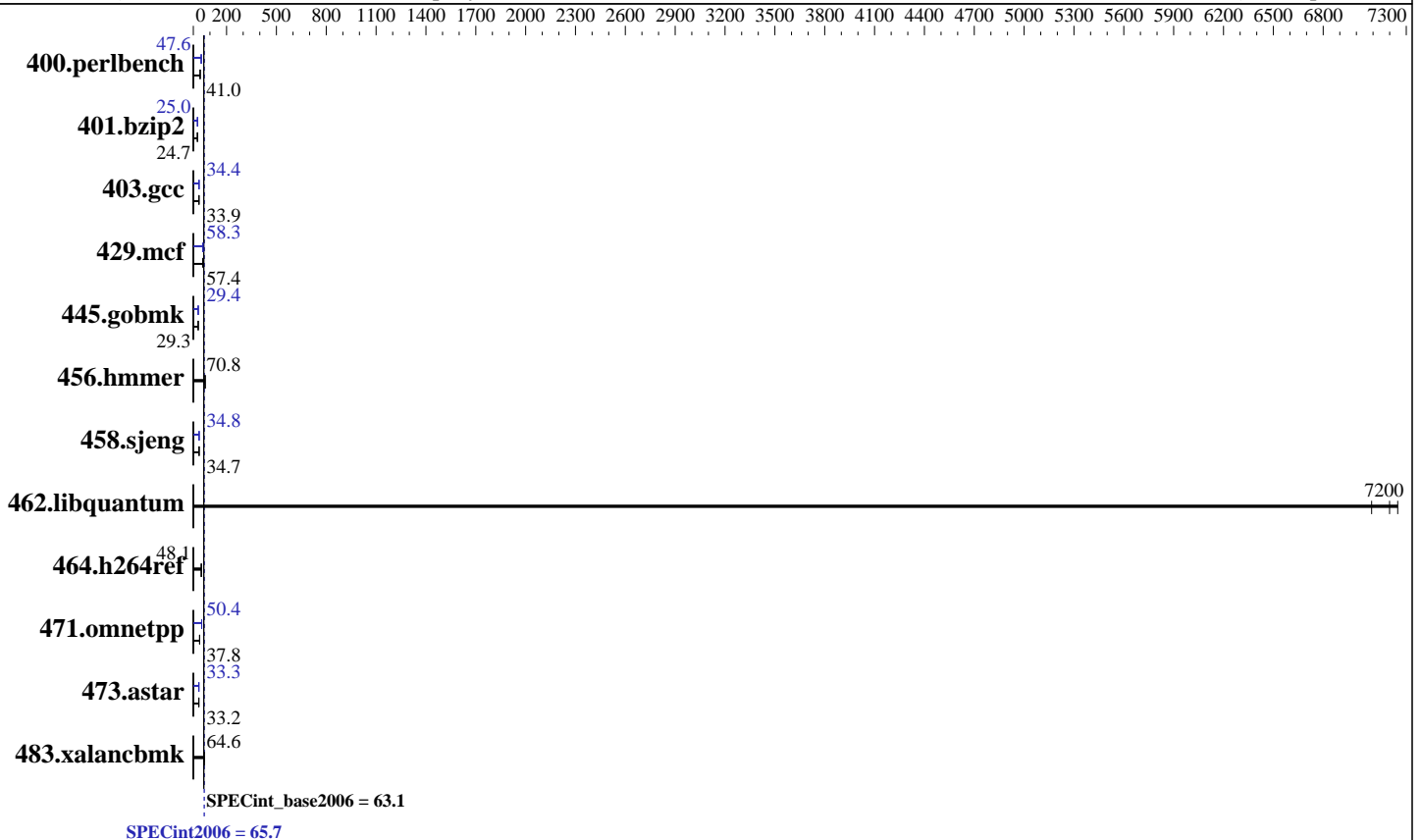
Test date: Nov-2014

Test sponsor: Hewlett-Packard Company

Hardware Availability: Sep-2014

Tested by: Hewlett-Packard Company

Software Availability: Sep-2014



Hardware

CPU Name: Intel Xeon E5-2697 v3
 CPU Characteristics: Intel Turbo Boost Technology up to 3.60 GHz
 CPU MHz: 2600
 FPU: Integrated
 CPU(s) enabled: 28 cores, 2 chips, 14 cores/chip
 CPU(s) orderable: 1,2 chip
 Primary Cache: 32 KB I + 32 KB D on chip per core
 Secondary Cache: 256 KB I+D on chip per core
 L3 Cache: 35 MB I+D on chip per chip
 Other Cache: None
 Memory: 256 GB (16 x 16 GB 2Rx4 PC4-2133P-R)
 Disk Subsystem: 1 x 400 GB SAS SSD, RAID 0
 Other Hardware: None

Software

Operating System: Red Hat Enterprise Linux Server release 7.0 (Maipo)
 Kernel 3.10.0-121.el7.x86_64
 Compiler: C/C++: Version 15.0.0.090 of Intel C++ Studio XE for Linux
 Auto Parallel: Yes
 File System: ext4
 System State: Run level 3 (multi-user)
 Base Pointers: 32/64-bit
 Peak Pointers: 32/64-bit
 Other Software: Microquill SmartHeap V10.0



SPEC CINT2006 Result

Copyright 2006-2014 Standard Performance Evaluation Corporation

Hewlett-Packard Company

ProLiant DL380 Gen9
(2.60 GHz, Intel Xeon E5-2697 v3)

SPECint2006 = **65.7**

SPECint_base2006 = **63.1**

CPU2006 license: 3

Test sponsor: Hewlett-Packard Company

Tested by: Hewlett-Packard Company

Test date: Nov-2014

Hardware Availability: Sep-2014

Software Availability: Sep-2014

Results Table

Benchmark	Base						Peak					
	Seconds	Ratio	Seconds	Ratio	Seconds	Ratio	Seconds	Ratio	Seconds	Ratio	Seconds	Ratio
400.perlbench	238	41.0	237	41.3	239	40.8	206	47.4	205	47.6	204	47.9
401.bzip2	392	24.6	390	24.7	390	24.7	386	25.0	386	25.0	385	25.0
403.gcc	238	33.9	237	33.9	236	34.0	235	34.3	234	34.5	234	34.4
429.mcf	159	57.3	158	57.6	159	57.4	157	58.3	159	57.5	156	58.3
445.gobmk	357	29.4	358	29.3	358	29.3	356	29.4	356	29.4	356	29.4
456.hammer	132	70.8	132	70.9	132	70.8	132	70.8	132	70.9	132	70.8
458.sjeng	349	34.7	348	34.7	349	34.7	347	34.8	348	34.8	347	34.9
462.libquantum	2.86	7250	2.88	7200	2.92	7090	2.86	7250	2.88	7200	2.92	7090
464.h264ref	460	48.1	458	48.3	462	47.9	460	48.1	458	48.3	462	47.9
471.omnetpp	166	37.8	166	37.7	163	38.4	123	50.6	125	50.1	124	50.4
473.astar	212	33.1	212	33.2	212	33.2	211	33.3	211	33.2	210	33.4
483.xalancbmk	104	66.1	108	63.7	107	64.6	104	66.1	108	63.7	107	64.6

Results appear in the order in which they were run. Bold underlined text indicates a median measurement.

Submit Notes

The config file option 'submit' was used.

Operating System Notes

Stack size set to unlimited using "ulimit -s unlimited"

Transparent Huge Pages enabled with:

```
echo always > /sys/kernel/mm/transparent_hugepage/enabled
```

Platform Notes

BIOS Configuration:

HP Power Profile set to Custom

HP Power Regulator to HP Static High Performance Mode

Minimum Processor Idle Power Core State set to C6 State

Minimum Processor Idle Power Package State set to No Package State

QPI Snoop Configuration set to Early Snoop

Thermal Configuration set to Maximum Cooling

Collaborative Power Control set to Disabled

Processor Power and Utilization Monitoring set to Disabled

Memory Double Refresh Rate set to 1x Refresh

Intel Hyperthreading Options set to Disabled

Sysinfo program /cpu2006/config/sysinfo.rev6914

\$Rev: 6914 \$ \$Date:: 2014-06-25 #\$ e3fbb8667b5a285932ceab81e28219e1

running on R112-BAO-DL380-Gen9VP2 Fri Nov 14 13:04:14 2014

This section contains SUT (System Under Test) info as seen by some common utilities. To remove or add to this section, see:

Continued on next page

Standard Performance Evaluation Corporation

info@spec.org

http://www.spec.org/

Page 2



SPEC CINT2006 Result

Copyright 2006-2014 Standard Performance Evaluation Corporation

Hewlett-Packard Company

SPECint2006 = 65.7

ProLiant DL380 Gen9
(2.60 GHz, Intel Xeon E5-2697 v3)

SPECint_base2006 = 63.1

CPU2006 license: 3

Test date: Nov-2014

Test sponsor: Hewlett-Packard Company

Hardware Availability: Sep-2014

Tested by: Hewlett-Packard Company

Software Availability: Sep-2014

Platform Notes (Continued)

<http://www.spec.org/cpu2006/Docs/config.html#sysinfo>

```

From /proc/cpuinfo
model name : Intel(R) Xeon(R) CPU E5-2697 v3 @ 2.60GHz
 2 "physical id"s (chips)
 28 "processors"
cores, siblings (Caution: counting these is hw and system dependent. The
following excerpts from /proc/cpuinfo might not be reliable. Use with
caution.)
  cpu cores : 14
  siblings  : 14
  physical 0: cores 0 2 4 5 6 8 9 10 11 12 13 14
  physical 1: cores 0 2 4 5 6 8 9 10 11 12 13 14
cache size : 35840 KB

```

```

From /proc/meminfo
MemTotal:      263845380 kB
HugePages_Total:    0
Hugepagesize:    2048 kB

```

```

From /etc/*release* /etc/*version*
os-release:
NAME="Red Hat Enterprise Linux Server"
VERSION="7.0 (Maipo)"
ID="rhel"
ID_LIKE="fedora"
VERSION_ID="7.0"
PRETTY_NAME="Red Hat Enterprise Linux Server 7.0 (Maipo)"
ANSI_COLOR="0;31"
CPE_NAME="cpe:/o:redhat:enterprise_linux:7.0:GA:server"
redhat-release: Red Hat Enterprise Linux Server release 7.0 (Maipo)
system-release: Red Hat Enterprise Linux Server release 7.0 (Maipo)
system-release-cpe: cpe:/o:redhat:enterprise_linux:7.0:ga:server

```

```

uname -a:
Linux R112-BAO-DL380-Gen9VP2 3.10.0-121.el7.x86_64 #1 SMP Tue Apr 8 10:48:19
EDT 2014 x86_64 x86_64 x86_64 GNU/Linux

```

run-level 3 Nov 14 12:51

```

SPEC is set to: /cpu2006
Filesystem      Type  Size  Used Avail Use% Mounted on
/dev/sda4       ext4  362G  203G  141G   60% /

```

Additional information from dmidecode:

Warning: Use caution when you interpret this section. The 'dmidecode' program reads system data which is "intended to allow hardware to be accurately determined", but the intent may not be met, as there are frequent changes to hardware, firmware, and the "DMTF SMBIOS" standard.

BIOS HP P89 07/11/2014
Memory:

Continued on next page



SPEC CINT2006 Result

Copyright 2006-2014 Standard Performance Evaluation Corporation

Hewlett-Packard Company

SPECint2006 = 65.7

ProLiant DL380 Gen9
(2.60 GHz, Intel Xeon E5-2697 v3)

SPECint_base2006 = 63.1

CPU2006 license: 3

Test date: Nov-2014

Test sponsor: Hewlett-Packard Company

Hardware Availability: Sep-2014

Tested by: Hewlett-Packard Company

Software Availability: Sep-2014

Platform Notes (Continued)

1x HP 752369-081 16 GB 2 rank 2133 MHz
15x HP NOT AVAILABLE 16 GB 2 rank 2133 MHz
8x UNKNOWN NOT AVAILABLE

(End of data from sysinfo program)

Regarding the sysinfo display about the memory installed, the correct amount of memory is 256 GB and the dmidecode description should have two lines reading as:

1x HP 752369-081 16 GB 2 rank 2133 MHz
15x HP NOT AVAILABLE 16 GB 2 rank 2133 MHz

General Notes

Environment variables set by runspec before the start of the run:

KMP_AFFINITY = "granularity=fine,scatter"
LD_LIBRARY_PATH = "/cpu2006/libs/32:/cpu2006/libs/64:/cpu2006/sh"
OMP_NUM_THREADS = "28"

Binaries compiled on a system with 1x Core i5-4670K CPU + 16GB memory using RedHat EL 7.0

Base Compiler Invocation

C benchmarks:

icc -m64

C++ benchmarks:

icpc -m64

Base Portability Flags

400.perlbench: -DSPEC_CPU_LP64 -DSPEC_CPU_LINUX_X64
401.bzip2: -DSPEC_CPU_LP64
403.gcc: -DSPEC_CPU_LP64
429.mcf: -DSPEC_CPU_LP64
445.gobmk: -DSPEC_CPU_LP64
456.hmmer: -DSPEC_CPU_LP64
458.sjeng: -DSPEC_CPU_LP64
462.libquantum: -DSPEC_CPU_LP64 -DSPEC_CPU_LINUX
464.h264ref: -DSPEC_CPU_LP64
471.omnetpp: -DSPEC_CPU_LP64
473.astar: -DSPEC_CPU_LP64
483.xalanbmk: -DSPEC_CPU_LP64 -DSPEC_CPU_LINUX



SPEC CINT2006 Result

Copyright 2006-2014 Standard Performance Evaluation Corporation

Hewlett-Packard Company

SPECint2006 = 65.7

ProLiant DL380 Gen9
(2.60 GHz, Intel Xeon E5-2697 v3)

SPECint_base2006 = 63.1

CPU2006 license: 3

Test date: Nov-2014

Test sponsor: Hewlett-Packard Company

Hardware Availability: Sep-2014

Tested by: Hewlett-Packard Company

Software Availability: Sep-2014

Base Optimization Flags

C benchmarks:

`-xCORE-AVX2 -ipo -O3 -no-prec-div -parallel -opt-prefetch -auto-p32`

C++ benchmarks:

`-xCORE-AVX2 -ipo -O3 -no-prec-div -opt-prefetch -auto-p32
-Wl,-z,muldefs -L/sh -lsmartheap64`

Base Other Flags

C benchmarks:

`403.gcc: -Dalloca=_alloca`

Peak Compiler Invocation

C benchmarks (except as noted below):

`icc -m64`

`400.perlbench: icc -m32 -L/opt/intel/composer_xe_2015/lib/ia32`

`445.gobmk: icc -m32 -L/opt/intel/composer_xe_2015/lib/ia32`

C++ benchmarks (except as noted below):

`icpc -m64`

`471.omnetpp: icpc -m32 -L/opt/intel/composer_xe_2015/lib/ia32`

Peak Portability Flags

`400.perlbench: -DSPEC_CPU_LINUX_IA32`

`401.bzip2: -DSPEC_CPU_LP64`

`403.gcc: -DSPEC_CPU_LP64`

`429.mcf: -DSPEC_CPU_LP64`

`456.hmmer: -DSPEC_CPU_LP64`

`458.sjeng: -DSPEC_CPU_LP64`

`462.libquantum: -DSPEC_CPU_LP64 -DSPEC_CPU_LINUX`

`464.h264ref: -DSPEC_CPU_LP64`

`473.astar: -DSPEC_CPU_LP64`

`483.xalancbmk: -DSPEC_CPU_LP64 -DSPEC_CPU_LINUX`



SPEC CINT2006 Result

Copyright 2006-2014 Standard Performance Evaluation Corporation

Hewlett-Packard Company

SPECint2006 = 65.7

ProLiant DL380 Gen9
(2.60 GHz, Intel Xeon E5-2697 v3)

SPECint_base2006 = 63.1

CPU2006 license: 3

Test date: Nov-2014

Test sponsor: Hewlett-Packard Company

Hardware Availability: Sep-2014

Tested by: Hewlett-Packard Company

Software Availability: Sep-2014

Peak Optimization Flags

C benchmarks:

400.perlbench: -xCORE-AVX2(pass 2) -prof-gen(pass 1) -ipo(pass 2)
-O3(pass 2) -no-prec-div(pass 2) -prof-use(pass 2)
-opt-prefetch -ansi-alias

401.bzip2: -xCORE-AVX2(pass 2) -prof-gen(pass 1) -ipo(pass 2)
-O3(pass 2) -no-prec-div -prof-use(pass 2) -auto-ilp32
-opt-prefetch -ansi-alias

403.gcc: -xCORE-AVX2 -ipo -O3 -no-prec-div -inline-calloc
-opt-malloc-options=3 -auto-ilp32

429.mcf: -xCORE-AVX2 -ipo -O3 -no-prec-div -parallel
-opt-prefetch -auto-p32

445.gobmk: -xCORE-AVX2(pass 2) -prof-gen(pass 1) -prof-use(pass 2)
-ansi-alias

456.hmmer: basepeak = yes

458.sjeng: -xCORE-AVX2(pass 2) -prof-gen(pass 1) -ipo(pass 2)
-O3(pass 2) -no-prec-div(pass 2) -prof-use(pass 2)
-unroll4

462.libquantum: basepeak = yes

464.h264ref: basepeak = yes

C++ benchmarks:

471.omnetpp: -xCORE-AVX2(pass 2) -prof-gen(pass 1) -ipo(pass 2)
-O3(pass 2) -no-prec-div(pass 2) -prof-use(pass 2)
-opt-ra-region-strategy=block -ansi-alias
-Wl,-z,muldefs -L/sh -lsmartheap

473.astar: -xCORE-AVX2 -ipo -O3 -no-prec-div -opt-prefetch
-auto-p32 -Wl,-z,muldefs -L/sh -lsmartheap64

483.xalancbmk: basepeak = yes

Peak Other Flags

C benchmarks:

403.gcc: -Dalloca=_alloca



SPEC CINT2006 Result

Copyright 2006-2014 Standard Performance Evaluation Corporation

Hewlett-Packard Company

ProLiant DL380 Gen9
(2.60 GHz, Intel Xeon E5-2697 v3)

SPECint2006 = 65.7

SPECint_base2006 = 63.1

CPU2006 license: 3

Test sponsor: Hewlett-Packard Company

Tested by: Hewlett-Packard Company

Test date: Nov-2014

Hardware Availability: Sep-2014

Software Availability: Sep-2014

The flags files that were used to format this result can be browsed at

<http://www.spec.org/cpu2006/flags/Intel-ic15.0-official-linux64.html>

<http://www.spec.org/cpu2006/flags/HP-Platform-Flags-Intel-V1.2-HSW-revE.html>

You can also download the XML flags sources by saving the following links:

<http://www.spec.org/cpu2006/flags/Intel-ic15.0-official-linux64.xml>

<http://www.spec.org/cpu2006/flags/HP-Platform-Flags-Intel-V1.2-HSW-revE.xml>

SPEC and SPECint are registered trademarks of the Standard Performance Evaluation Corporation. All other brand and product names appearing in this result are trademarks or registered trademarks of their respective holders.

For questions about this result, please contact the tester.
For other inquiries, please contact webmaster@spec.org.

Tested with SPEC CPU2006 v1.2.
Report generated on Wed Dec 3 10:34:52 2014 by SPEC CPU2006 PS/PDF formatter v6932.
Originally published on 2 December 2014.