



SPEC® CINT2006 Result

Copyright 2006-2017 Standard Performance Evaluation Corporation

Lenovo Global Technology

SPECint®2006 = 81.6

ThinkSystem SR950
(2.10 GHz, Intel Xeon Platinum 8170M)

SPECint_base2006 = 78.3

CPU2006 license: 9017

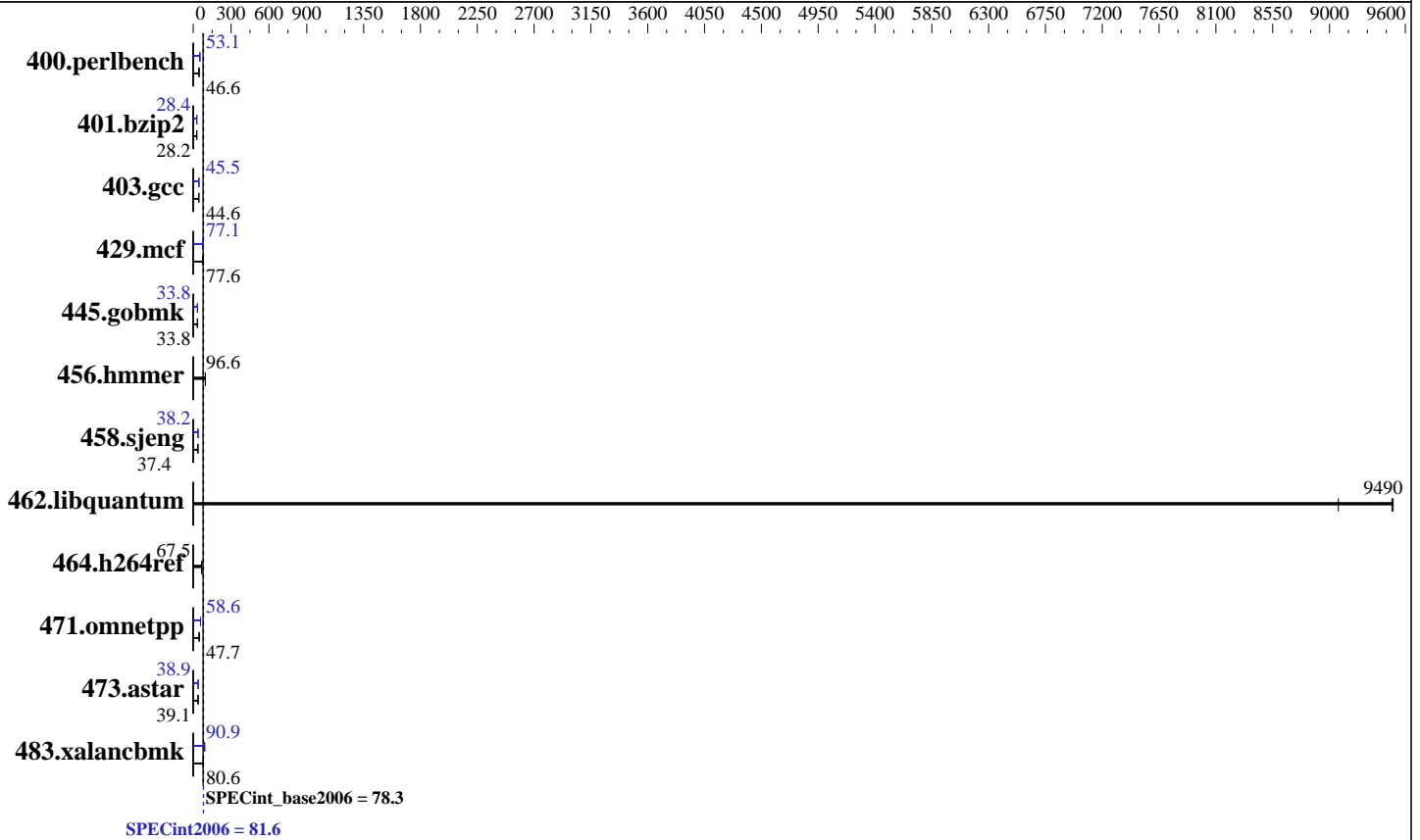
Test date: Oct-2017

Test sponsor: Lenovo Global Technology

Hardware Availability: Sep-2017

Tested by: Lenovo Global Technology

Software Availability: Apr-2017



Hardware

CPU Name: Intel Xeon Platinum 8170M
 CPU Characteristics: Intel Turbo Boost Technology up to 3.70 GHz
 CPU MHz: 2100
 FPU: Integrated
 CPU(s) enabled: 104 cores, 4 chips, 26 cores/chip
 CPU(s) orderable: 2,4 chips
 Primary Cache: 32 KB I + 32 KB D on chip per core
 Secondary Cache: 1 MB I+D on chip per core
 L3 Cache: 35.75 MB I+D on chip per chip
 Other Cache: None
 Memory: 1536 GB (48 x 32 GB 2Rx4 PC4-2666V-R)
 Disk Subsystem: 1 x 800 GB SAS SSD
 Other Hardware: None

Software

Operating System: Red Hat Enterprise Linux Server release 7.3 (Maipo)
 Kernel 3.10.0-514.el7.x86_64
 Compiler: C/C++: Version 17.0.3.191 of Intel C/C++ Compiler for Linux
 Auto Parallel: Yes
 File System: xfs
 System State: Run level 3 (multi-user)
 Base Pointers: 32/64-bit
 Peak Pointers: 32/64-bit
 Other Software: Microquill SmartHeap V10.2



SPEC CINT2006 Result

Copyright 2006-2017 Standard Performance Evaluation Corporation

Lenovo Global Technology

SPECint2006 = **81.6**

ThinkSystem SR950
(2.10 GHz, Intel Xeon Platinum 8170M)

SPECint_base2006 = **78.3**

CPU2006 license: 9017

Test date: Oct-2017

Test sponsor: Lenovo Global Technology

Hardware Availability: Sep-2017

Tested by: Lenovo Global Technology

Software Availability: Apr-2017

Results Table

| Benchmark | Base | | | | | | Peak | | | | | |
|----------------|-------------|-------------|------------|-------------|-------------|-------------|-------------|-------------|------------|-------------|-------------|-------------|
| | Seconds | Ratio | Seconds | Ratio | Seconds | Ratio | Seconds | Ratio | Seconds | Ratio | Seconds | Ratio |
| 400.perlbench | 210 | 46.6 | 210 | 46.4 | 210 | 46.6 | 184 | 53.1 | 184 | 53.1 | 184 | 53.0 |
| 401.bzip2 | 342 | 28.2 | 342 | 28.2 | 341 | 28.3 | 339 | 28.4 | 339 | 28.4 | 339 | 28.4 |
| 403.gcc | 181 | 44.6 | 181 | 44.6 | 181 | 44.5 | 177 | 45.5 | 177 | 45.4 | 177 | 45.5 |
| 429.mcf | 119 | 77.0 | 118 | 77.6 | 117 | 77.7 | 118 | 77.1 | 117 | 77.8 | 120 | 76.2 |
| 445.gobmk | 311 | 33.7 | 311 | 33.8 | 311 | 33.8 | 311 | 33.8 | 310 | 33.8 | 310 | 33.8 |
| 456.hammer | 96.4 | 96.7 | 96.6 | 96.6 | 96.6 | 96.6 | 96.4 | 96.7 | 96.6 | 96.6 | 96.6 | 96.6 |
| 458.sjeng | 324 | 37.4 | 323 | 37.5 | 323 | 37.4 | 317 | 38.1 | 317 | 38.2 | 317 | 38.2 |
| 462.libquantum | 2.28 | 9070 | 2.18 | 9500 | 2.18 | 9490 | 2.28 | 9070 | 2.18 | 9500 | 2.18 | 9490 |
| 464.h264ref | 327 | 67.6 | 328 | 67.5 | 328 | 67.4 | 327 | 67.6 | 328 | 67.5 | 328 | 67.4 |
| 471.omnetpp | 131 | 47.8 | 131 | 47.7 | 132 | 47.2 | 106 | 59.0 | 107 | 58.6 | 107 | 58.3 |
| 473.astar | 179 | 39.1 | 179 | 39.2 | 179 | 39.1 | 180 | 38.9 | 180 | 38.9 | 180 | 39.0 |
| 483.xalancbmk | 85.6 | 80.6 | 87.3 | 79.1 | 85.6 | 80.6 | 75.9 | 90.9 | 76.1 | 90.6 | 75.8 | 91.0 |

Results appear in the order in which they were run. Bold underlined text indicates a median measurement.

Submit Notes

The config file option 'submit' was used.

Operating System Notes

Stack size set to unlimited using "ulimit -s unlimited"

Platform Notes

BIOS configuration:

Choose Operating Mode set to Maximum Performance

Hyper-Threading set to Disable

Stale AtoS set to Enable

LLC dead line alloc set to Disable

Sysinfo program /home/cpu2006-1.2-ic17.0u3/config/sysinfo.rev6993

Revision 6993 of 2015-11-06 (b5e8d4b4eb51ed28d7f98696cbe290c1)

running on localhost.localdomain Mon Oct 23 23:31:38 2017

This section contains SUT (System Under Test) info as seen by some common utilities. To remove or add to this section, see:

<http://www.spec.org/cpu2006/Docs/config.html#sysinfo>

From /proc/cpuinfo

model name : Intel(R) Xeon(R) Platinum 8170M CPU @ 2.10GHz

4 "physical id"s (chips)

104 "processors"

cores, siblings (Caution: counting these is hw and system dependent. The following excerpts from /proc/cpuinfo might not be reliable. Use with

Continued on next page

Standard Performance Evaluation Corporation

info@spec.org

<http://www.spec.org/>

Page 2



SPEC CINT2006 Result

Copyright 2006-2017 Standard Performance Evaluation Corporation

Lenovo Global Technology

SPECint2006 = 81.6

ThinkSystem SR950
(2.10 GHz, Intel Xeon Platinum 8170M)

SPECint_base2006 = 78.3

CPU2006 license: 9017

Test date: Oct-2017

Test sponsor: Lenovo Global Technology

Hardware Availability: Sep-2017

Tested by: Lenovo Global Technology

Software Availability: Apr-2017

Platform Notes (Continued)

caution.)

cpu cores : 26

siblings : 26

physical 0: cores 0 1 2 3 4 5 6 8 9 10 11 12 13 16 17 18 19 20 21 22 24 25
26 27 28 29

physical 1: cores 0 1 2 3 4 5 6 8 9 10 11 12 13 16 17 18 19 20 21 22 24 25
26 27 28 29

physical 2: cores 0 1 2 3 4 5 6 8 9 10 11 12 13 16 17 18 19 20 21 22 24 25
26 27 28 29

physical 3: cores 0 1 2 3 4 5 6 8 9 10 11 12 13 16 17 18 19 20 21 22 24 25
26 27 28 29

cache size : 36608 KB

From /proc/meminfo

MemTotal: 1584772088 kB

HugePages_Total: 0

Hugepagesize: 2048 kB

From /etc/*release* /etc/*version*

os-release:

NAME="Red Hat Enterprise Linux Server"

VERSION="7.3 (Maipo)"

ID="rhel"

ID_LIKE="fedora"

VERSION_ID="7.3"

PRETTY_NAME="Red Hat Enterprise Linux Server 7.3 (Maipo)"

ANSI_COLOR="0;31"

CPE_NAME="cpe:/o:redhat:enterprise_linux:7.3:GA:server"

redhat-release: Red Hat Enterprise Linux Server release 7.3 (Maipo)

system-release: Red Hat Enterprise Linux Server release 7.3 (Maipo)

system-release-cpe: cpe:/o:redhat:enterprise_linux:7.3:ga:server

uname -a:

Linux localhost.localdomain 3.10.0-514.el7.x86_64 #1 SMP Wed Oct 19 11:24:13 EDT 2016 x86_64 x86_64 x86_64 GNU/Linux

run-level 3 Oct 23 23:24

SPEC is set to: /home/cpu2006-1.2-ic17.0u3

Filesystem Type Size Used Avail Use% Mounted on

/dev/sda3 xfs 743G 6.4G 737G 1% /

Additional information from dmidecode:

Warning: Use caution when you interpret this section. The 'dmidecode' program reads system data which is "intended to allow hardware to be accurately determined", but the intent may not be met, as there are frequent changes to hardware, firmware, and the "DMTF SMBIOS" standard.

BIOS Lenovo -[PSE103K-1.00]- 06/19/2017

Memory:

48x NO DIMM NO DIMM

48x Samsung M393A4K40BB2-CTD 32 GB 2 rank 2666 MHz

Continued on next page



SPEC CINT2006 Result

Copyright 2006-2017 Standard Performance Evaluation Corporation

Lenovo Global Technology

SPECint2006 = 81.6

ThinkSystem SR950
(2.10 GHz, Intel Xeon Platinum 8170M)

SPECint_base2006 = 78.3

CPU2006 license: 9017

Test date: Oct-2017

Test sponsor: Lenovo Global Technology

Hardware Availability: Sep-2017

Tested by: Lenovo Global Technology

Software Availability: Apr-2017

Platform Notes (Continued)

(End of data from sysinfo program)

General Notes

Environment variables set by runspec before the start of the run:

KMP_AFFINITY = "granularity=fine,compact,0,3"

LD_LIBRARY_PATH = "/home/cpu2006-1.2-ic17.0u3/lib/ia32:/home/cpu2006-1.2-ic17.0u3/lib/intel64:/home/cpu2006-1.2-ic17.0u3/sh10.2"

OMP_NUM_THREADS = "104"

Binaries compiled on a system with 1x Intel Core i7-4790 CPU + 32GB RAM
memory using Redhat Enterprise Linux 7.2

Transparent Huge Pages enabled by default.

Filesystem page cache cleared with:

shell invocation of 'sync; echo 3 > /proc/sys/vm/drop_caches' prior to run

Base Compiler Invocation

C benchmarks:

icc -m64

C++ benchmarks:

icpc -m64

Base Portability Flags

400.perlbench: -DSPEC_CPU_LP64 -DSPEC_CPU_LINUX_X64
401.bzip2: -DSPEC_CPU_LP64
403.gcc: -DSPEC_CPU_LP64
429.mcf: -DSPEC_CPU_LP64
445.gobmk: -DSPEC_CPU_LP64
456.hmmer: -DSPEC_CPU_LP64
458.sjeng: -DSPEC_CPU_LP64
462.libquantum: -DSPEC_CPU_LP64 -DSPEC_CPU_LINUX
464.h264ref: -DSPEC_CPU_LP64
471.omnetpp: -DSPEC_CPU_LP64
473.astar: -DSPEC_CPU_LP64
483.xalancbmk: -DSPEC_CPU_LP64 -DSPEC_CPU_LINUX

Base Optimization Flags

C benchmarks:

-xCORE-AVX2 -ipo -O3 -no-prec-div -parallel -qopt-prefetch
-auto-p32

Continued on next page



SPEC CINT2006 Result

Copyright 2006-2017 Standard Performance Evaluation Corporation

Lenovo Global Technology

SPECint2006 = 81.6

ThinkSystem SR950
(2.10 GHz, Intel Xeon Platinum 8170M)

SPECint_base2006 = 78.3

CPU2006 license: 9017

Test date: Oct-2017

Test sponsor: Lenovo Global Technology

Hardware Availability: Sep-2017

Tested by: Lenovo Global Technology

Software Availability: Apr-2017

Base Optimization Flags (Continued)

C++ benchmarks:

-xCORE-AVX2 -ipo -O3 -no-prec-div -qopt-prefetch -auto-p32
-Wl,-z,muldefs -L/sh10.2 -lsmartheap64

Base Other Flags

C benchmarks:

403.gcc: -Dalloca=_alloca

Peak Compiler Invocation

C benchmarks (except as noted below):

icc -m64

400.perlbench: icc -m32 -L/opt/intel/compilers_and_libraries_2017/linux/lib/ia32

445.gobmk: icc -m32 -L/opt/intel/compilers_and_libraries_2017/linux/lib/ia32

C++ benchmarks (except as noted below):

icc -m32 -L/opt/intel/compilers_and_libraries_2017/linux/lib/ia32

473.astar: icpc -m64

Peak Portability Flags

400.perlbench: -D_FILE_OFFSET_BITS=64 -DSPEC_CPU_LINUX_IA32

401.bzip2: -DSPEC_CPU_LP64

403.gcc: -DSPEC_CPU_LP64

429.mcf: -DSPEC_CPU_LP64

445.gobmk: -D_FILE_OFFSET_BITS=64

456.hmmer: -DSPEC_CPU_LP64

458.sjeng: -DSPEC_CPU_LP64

462.libquantum: -DSPEC_CPU_LP64 -DSPEC_CPU_LINUX

464.h264ref: -DSPEC_CPU_LP64

471.omnetpp: -D_FILE_OFFSET_BITS=64

473.astar: -DSPEC_CPU_LP64

483.xalancbmk: -D_FILE_OFFSET_BITS=64 -DSPEC_CPU_LINUX



SPEC CINT2006 Result

Copyright 2006-2017 Standard Performance Evaluation Corporation

Lenovo Global Technology

SPECint2006 = 81.6

ThinkSystem SR950
(2.10 GHz, Intel Xeon Platinum 8170M)

SPECint_base2006 = 78.3

CPU2006 license: 9017

Test date: Oct-2017

Test sponsor: Lenovo Global Technology

Hardware Availability: Sep-2017

Tested by: Lenovo Global Technology

Software Availability: Apr-2017

Peak Optimization Flags

C benchmarks:

400.perlbench: -prof-gen(pass 1) -prof-use(pass 2) -xCORE-AVX2(pass 2)
-par-num-threads=1(pass 1) -ipo(pass 2) -O3(pass 2)
-no-prec-div(pass 2) -qopt-prefetch

401.bzip2: -prof-gen(pass 1) -prof-use(pass 2) -xCORE-AVX2(pass 2)
-par-num-threads=1(pass 1) -ipo(pass 2) -O3(pass 2)
-no-prec-div -auto-ilp32 -qopt-prefetch

403.gcc: -xCORE-AVX2 -ipo -O3 -no-prec-div -inline-calloc
-qopt-malloc-options=3 -auto-ilp32

429.mcf: -xCORE-AVX2 -ipo -O3 -no-prec-div -parallel
-qopt-prefetch -auto-p32

445.gobmk: -prof-gen(pass 1) -prof-use(pass 2) -xCORE-AVX2(pass 2)
-par-num-threads=1(pass 1) -ipo(pass 2) -O3(pass 2)
-no-prec-div(pass 2)

456.hmmer: basepeak = yes

458.sjeng: -prof-gen(pass 1) -prof-use(pass 2) -xCORE-AVX2(pass 2)
-par-num-threads=1(pass 1) -ipo(pass 2) -O3(pass 2)
-no-prec-div(pass 2) -unroll4

462.libquantum: basepeak = yes

464.h264ref: basepeak = yes

C++ benchmarks:

471.omnetpp: -prof-gen(pass 1) -prof-use(pass 2) -xCORE-AVX2(pass 2)
-par-num-threads=1(pass 1) -ipo(pass 2) -O3(pass 2)
-no-prec-div(pass 2) -qopt-ra-region-strategy=block
-Wl,-z,muldefs -L/sh10.2 -lsmarheap

473.astar: -xCORE-AVX2 -ipo -O3 -no-prec-div -qopt-prefetch
-auto-p32 -Wl,-z,muldefs -L/sh10.2 -lsmarheap64

483.xalancbmk: -xCORE-AVX2 -ipo -O3 -no-prec-div -qopt-prefetch
-Wl,-z,muldefs -L/sh10.2 -lsmarheap

Peak Other Flags

C benchmarks:

Continued on next page



SPEC CINT2006 Result

Copyright 2006-2017 Standard Performance Evaluation Corporation

Lenovo Global Technology

ThinkSystem SR950
(2.10 GHz, Intel Xeon Platinum 8170M)

SPECint2006 = 81.6

SPECint_base2006 = 78.3

CPU2006 license: 9017

Test sponsor: Lenovo Global Technology

Tested by: Lenovo Global Technology

Test date: Oct-2017

Hardware Availability: Sep-2017

Software Availability: Apr-2017

Peak Other Flags (Continued)

403.gcc: -Dalloca=_alloca

The flags files that were used to format this result can be browsed at

<http://www.spec.org/cpu2006/flags/Intel-ic17.0-official-linux64-revF.html>

<http://www.spec.org/cpu2006/flags/Lenovo-Platform-Flags-V1.2-SKL-E.html>

You can also download the XML flags sources by saving the following links:

<http://www.spec.org/cpu2006/flags/Intel-ic17.0-official-linux64-revF.xml>

<http://www.spec.org/cpu2006/flags/Lenovo-Platform-Flags-V1.2-SKL-E.xml>

SPEC and SPECint are registered trademarks of the Standard Performance Evaluation Corporation. All other brand and product names appearing in this result are trademarks or registered trademarks of their respective holders.

For questions about this result, please contact the tester.
For other inquiries, please contact webmaster@spec.org.

Tested with SPEC CPU2006 v1.2.
Report generated on Mon Nov 27 11:22:06 2017 by SPEC CPU2006 PS/PDF formatter v6932.
Originally published on 22 November 2017.