



SPEC® CFP2006 Result

Copyright 2006-2016 Standard Performance Evaluation Corporation

Cisco Systems

Cisco UCS C240 M4 (Intel Xeon E5-2650 v4, 2.20 GHz)

SPECfp®2006 = 111

SPECfp_base2006 = 106

CPU2006 license: 9019

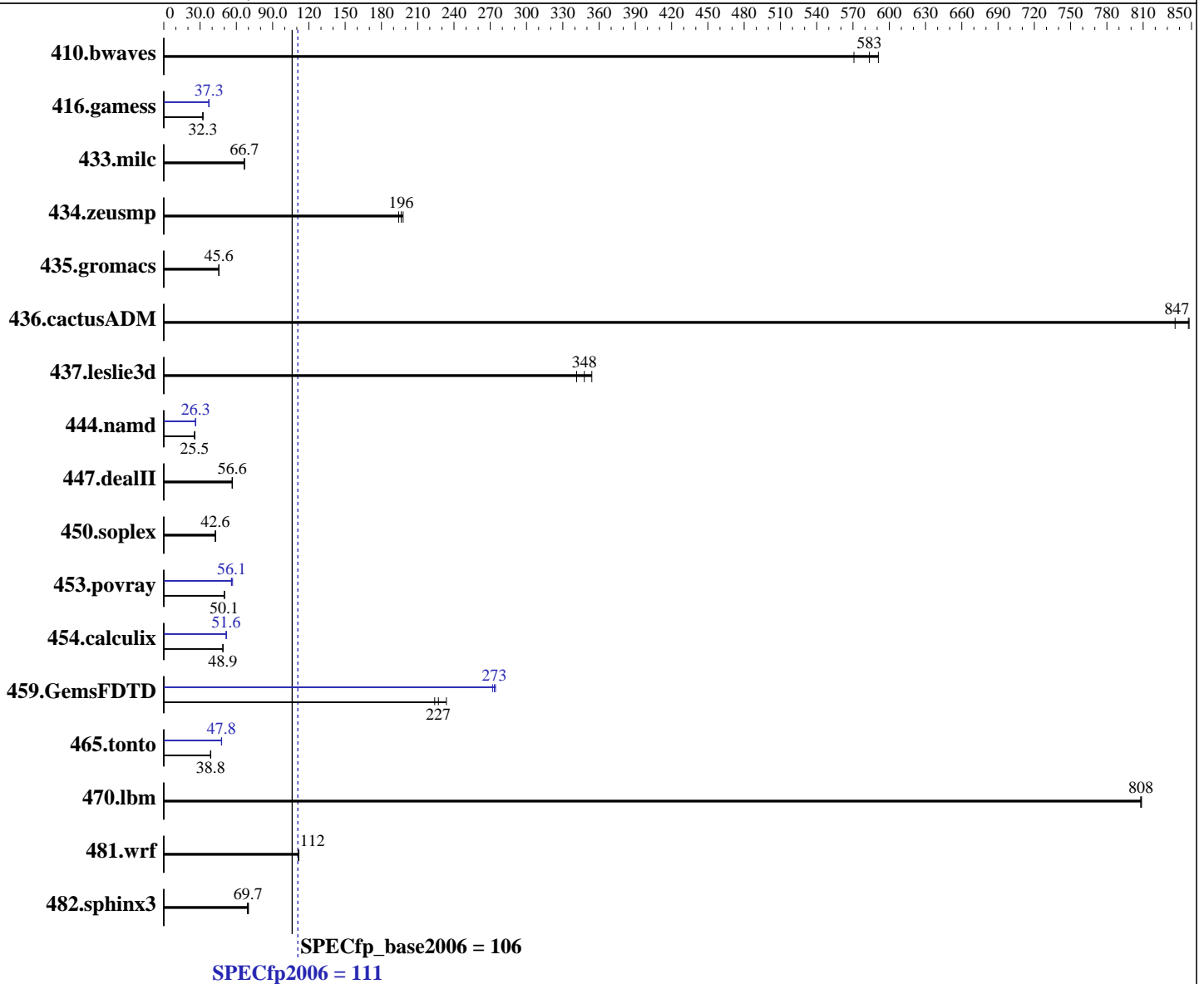
Test sponsor: Cisco Systems

Tested by: Cisco Systems

Test date: Oct-2016

Hardware Availability: Apr-2016

Software Availability: Dec-2015



SPECfp2006 = 111

Hardware

CPU Name: Intel Xeon E5-2650 v4
 CPU Characteristics: Intel Turbo Boost Technology up to 2.90 GHz
 CPU MHz: 2200
 FPU: Integrated
 CPU(s) enabled: 24 cores, 2 chips, 12 cores/chip
 CPU(s) orderable: 1,2 chips
 Primary Cache: 32 KB I + 32 KB D on chip per core
 Secondary Cache: 256 KB I+D on chip per core

Continued on next page

Software

Operating System: SUSE Linux Enterprise Server 12 SP1 (x86_64) 3.12.49-11-default
 Compiler: C/C++: Version 16.0.0.101 of Intel C++ Studio XE for Linux;
 Fortran: Version 16.0.0.101 of Intel Fortran Studio XE for Linux
 Auto Parallel: Yes
 File System: xfs
 System State: Run level 5 (multi-user)

Continued on next page



SPEC CFP2006 Result

Copyright 2006-2016 Standard Performance Evaluation Corporation

Cisco Systems

Cisco UCS C240 M4 (Intel Xeon E5-2650 v4, 2.20 GHz)

SPECfp2006 = **111**

SPECfp_base2006 = **106**

CPU2006 license: 9019

Test sponsor: Cisco Systems

Tested by: Cisco Systems

Test date: Oct-2016

Hardware Availability: Apr-2016

Software Availability: Dec-2015

L3 Cache: 30 MB I+D on chip per chip
Other Cache: None
Memory: 256 GB (16 x 16 GB 2Rx4 PC4-2400T-R)
Disk Subsystem: 1 x 1.2 TB SAS HDD, 10K RPM
Other Hardware: None

Base Pointers: 64-bit
Peak Pointers: 32/64-bit
Other Software: None

Results Table

Benchmark	Base						Peak					
	Seconds	Ratio	Seconds	Ratio	Seconds	Ratio	Seconds	Ratio	Seconds	Ratio	Seconds	Ratio
410.bwaves	23.0	591	23.8	571	<u>23.3</u>	<u>583</u>	23.0	591	23.8	571	<u>23.3</u>	<u>583</u>
416.gamess	606	32.3	<u>605</u>	<u>32.3</u>	605	32.4	525	37.3	525	37.3	<u>525</u>	<u>37.3</u>
433.milc	138	66.7	<u>138</u>	<u>66.7</u>	138	66.5	138	66.7	<u>138</u>	<u>66.7</u>	138	66.5
434.zeusmp	46.8	194	<u>46.3</u>	<u>196</u>	46.0	198	46.8	194	<u>46.3</u>	<u>196</u>	46.0	198
435.gromacs	<u>157</u>	<u>45.6</u>	157	45.5	157	45.6	<u>157</u>	<u>45.6</u>	157	45.5	157	45.6
436.cactusADM	<u>14.1</u>	<u>847</u>	14.3	836	14.1	848	<u>14.1</u>	<u>847</u>	14.3	836	14.1	848
437.leslie3d	26.6	354	<u>27.0</u>	<u>348</u>	27.5	341	26.6	354	<u>27.0</u>	<u>348</u>	27.5	341
444.namd	<u>315</u>	<u>25.5</u>	315	25.5	315	25.5	305	26.3	<u>305</u>	<u>26.3</u>	306	26.2
447.dealII	<u>202</u>	<u>56.6</u>	202	56.6	201	56.8	<u>202</u>	<u>56.6</u>	202	56.6	201	56.8
450.soplex	<u>196</u>	<u>42.6</u>	195	42.9	196	42.6	<u>196</u>	<u>42.6</u>	195	42.9	196	42.6
453.povray	<u>106</u>	<u>50.1</u>	106	50.1	106	50.2	<u>94.9</u>	<u>56.1</u>	95.2	55.9	93.5	56.9
454.calculix	169	48.9	168	49.0	<u>169</u>	<u>48.9</u>	160	51.6	<u>160</u>	<u>51.6</u>	160	51.7
459.GemsFDTD	47.4	224	<u>46.7</u>	<u>227</u>	45.4	234	38.7	274	<u>38.8</u>	<u>273</u>	39.0	272
465.tonto	255	38.6	<u>254</u>	<u>38.8</u>	253	38.9	<u>206</u>	<u>47.8</u>	207	47.7	206	47.9
470.lbm	17.0	808	<u>17.0</u>	<u>808</u>	17.0	809	17.0	808	<u>17.0</u>	<u>808</u>	17.0	809
481.wrf	100	111	<u>100</u>	<u>112</u>	100	112	100	111	<u>100</u>	<u>112</u>	100	112
482.sphinx3	282	69.1	<u>279</u>	<u>69.7</u>	278	70.0	282	69.1	<u>279</u>	<u>69.7</u>	278	70.0

Results appear in the order in which they were run. Bold underlined text indicates a median measurement.

Operating System Notes

Stack size set to unlimited using "ulimit -s unlimited"

Platform Notes

BIOS Settings:

Intel Hyper-Threading Technology option set to Disabled

CPU performance set to Enterprise

Power Technology set to Energy Efficient

Energy Performance BIAS setting set to Balanced Performance

Memory RAS configuration set to Maximum Performance

Memory Power Saving Mode set to Disabled

QPI Snoop Mode set to Home Directory Snoop with OSB

Sysinfo program /opt/cpu2006-1.2/config/sysinfo.rev6914

\$Rev: 6914 \$ \$Date:: 2014-06-25 # \$ e3fbb8667b5a285932ceab81e28219e1

Continued on next page

Standard Performance Evaluation Corporation

info@spec.org

http://www.spec.org/

Page 2



SPEC CFP2006 Result

Copyright 2006-2016 Standard Performance Evaluation Corporation

Cisco Systems

Cisco UCS C240 M4 (Intel Xeon E5-2650 v4, 2.20 GHz)

SPECfp2006 = 111

SPECfp_base2006 = 106

CPU2006 license: 9019
Test sponsor: Cisco Systems
Tested by: Cisco Systems

Test date: Oct-2016
Hardware Availability: Apr-2016
Software Availability: Dec-2015

Platform Notes (Continued)

running on linux-cd5x Mon Oct 31 14:19:15 2016

This section contains SUT (System Under Test) info as seen by some common utilities. To remove or add to this section, see: <http://www.spec.org/cpu2006/Docs/config.html#sysinfo>

```
From /proc/cpuinfo
model name : Intel(R) Xeon(R) CPU E5-2650 v4@ 2.20GHz
 2 "physical id"s (chips)
 24 "processors"
cores, siblings (Caution: counting these is hw and system dependent. The
following excerpts from /proc/cpuinfo might not be reliable. Use with
caution.)
  cpu cores : 12
  siblings  : 12
  physical 0: cores 0 1 2 3 4 5 8 9 10 11 12 13
  physical 1: cores 0 1 2 3 4 5 8 9 10 11 12 13
cache size : 30720 KB
```

```
From /proc/meminfo
MemTotal:      264568896 kB
HugePages_Total:       0
Hugepagesize:    2048 kB
```

```
/usr/bin/lsb_release -d
SUSE Linux Enterprise Server 12 SP1
```

```
From /etc/*release* /etc/*version*
SuSE-release:
SUSE Linux Enterprise Server 12 (x86_64)
VERSION = 12
PATCHLEVEL = 1
# This file is deprecated and will be removed in a future service pack or
release.
# Please check /etc/os-release for details about this release.
os-release:
NAME="SLES"
VERSION="12-SP1"
VERSION_ID="12.1"
PRETTY_NAME="SUSE Linux Enterprise Server 12 SP1"
ID="sles"
ANSI_COLOR="0;32"
CPE_NAME="cpe:/o:suse:sles:12:sp1"
```

```
uname -a:
Linux linux-cd5x 3.12.49-11-default #1 SMP Wed Nov 11 20:52:43 UTC 2015
(8d714a0) x86_64 x86_64 x86_64 GNU/Linux
```

```
run-level 5 Oct 31 05:21
```

```
SPEC is set to: /opt/cpu2006-1.2
Filesystem      Type  Size  Used Avail Use% Mounted on
Continued on next page
```



SPEC CFP2006 Result

Copyright 2006-2016 Standard Performance Evaluation Corporation

Cisco Systems

Cisco UCS C240 M4 (Intel Xeon E5-2650 v4, 2.20 GHz)

SPECfp2006 = 111

SPECfp_base2006 = 106

CPU2006 license: 9019

Test sponsor: Cisco Systems

Tested by: Cisco Systems

Test date: Oct-2016

Hardware Availability: Apr-2016

Software Availability: Dec-2015

Platform Notes (Continued)

/dev/sda1 xfs 1.1T 15G 1.1T 2% /
Additional information from dmidecode:

Warning: Use caution when you interpret this section. The 'dmidecode' program reads system data which is "intended to allow hardware to be accurately determined", but the intent may not be met, as there are frequent changes to hardware, firmware, and the "DMTF SMBIOS" standard.

BIOS Cisco Systems, Inc. C240M4.2.0.13d.0.0812161132 08/12/2016

Memory:

16x 0xCE00 M393A2G40EB1-CRC 16 GB 2 rank 2400 MHz
8x NO DIMM NO DIMM

(End of data from sysinfo program)

General Notes

Environment variables set by runspec before the start of the run:

KMP_AFFINITY = "granularity=fine,compact"

LD_LIBRARY_PATH = "/opt/cpu2006-1.2/libs/32:/opt/cpu2006-1.2/libs/64:/opt/cpu2006-1.2/sh"

OMP_NUM_THREADS = "24"

Binaries compiled on a system with 1x Intel Core i5-4670K CPU + 32GB memory using RedHat EL 7.1

Transparent Huge Pages enabled with:

echo always > /sys/kernel/mm/transparent_hugepage/enabled

Base Compiler Invocation

C benchmarks:

icc -m64

C++ benchmarks:

icpc -m64

Fortran benchmarks:

ifort -m64

Benchmarks using both Fortran and C:

icc -m64 ifort -m64

Base Portability Flags

410.bwaves: -DSPEC_CPU_LP64

416.gamess: -DSPEC_CPU_LP64

433.milc: -DSPEC_CPU_LP64

Continued on next page

Standard Performance Evaluation Corporation

info@spec.org

http://www.spec.org/

Page 4



SPEC CFP2006 Result

Copyright 2006-2016 Standard Performance Evaluation Corporation

Cisco Systems

Cisco UCS C240 M4 (Intel Xeon E5-2650 v4, 2.20 GHz)

SPECfp2006 = 111

SPECfp_base2006 = 106

CPU2006 license: 9019

Test sponsor: Cisco Systems

Tested by: Cisco Systems

Test date: Oct-2016

Hardware Availability: Apr-2016

Software Availability: Dec-2015

Base Portability Flags (Continued)

```

434.zeusmp: -DSPEC_CPU_LP64
435.gromacs: -DSPEC_CPU_LP64 -nofor_main
436.cactusADM: -DSPEC_CPU_LP64 -nofor_main
437.leslie3d: -DSPEC_CPU_LP64
444.namd: -DSPEC_CPU_LP64
447.deallI: -DSPEC_CPU_LP64
450.soplex: -DSPEC_CPU_LP64
453.povray: -DSPEC_CPU_LP64
454.calculix: -DSPEC_CPU_LP64 -nofor_main
459.GemsFDTD: -DSPEC_CPU_LP64
465.tonto: -DSPEC_CPU_LP64
470.lbm: -DSPEC_CPU_LP64
481.wrf: -DSPEC_CPU_LP64 -DSPEC_CPU_CASE_FLAG -DSPEC_CPU_LINUX
482.sphinx3: -DSPEC_CPU_LP64

```

Base Optimization Flags

C benchmarks:

```

-xCORE-AVX2 -ipo -O3 -no-prec-div -parallel -opt-prefetch
-ansi-alias

```

C++ benchmarks:

```

-xCORE-AVX2 -ipo -O3 -no-prec-div -opt-prefetch -ansi-alias

```

Fortran benchmarks:

```

-xCORE-AVX2 -ipo -O3 -no-prec-div -parallel -opt-prefetch

```

Benchmarks using both Fortran and C:

```

-xCORE-AVX2 -ipo -O3 -no-prec-div -parallel -opt-prefetch
-ansi-alias

```

Peak Compiler Invocation

C benchmarks:

```

icc -m64

```

C++ benchmarks:

```

icpc -m64

```

Fortran benchmarks:

```

ifort -m64

```

Benchmarks using both Fortran and C:

```

icc -m64 ifort -m64

```



SPEC CFP2006 Result

Copyright 2006-2016 Standard Performance Evaluation Corporation

Cisco Systems

Cisco UCS C240 M4 (Intel Xeon E5-2650 v4, 2.20 GHz)

SPECfp2006 = 111

SPECfp_base2006 = 106

CPU2006 license: 9019

Test sponsor: Cisco Systems

Tested by: Cisco Systems

Test date: Oct-2016

Hardware Availability: Apr-2016

Software Availability: Dec-2015

Peak Portability Flags

Same as Base Portability Flags

Peak Optimization Flags

C benchmarks:

433.milc: basepeak = yes

470.lbm: basepeak = yes

482.sphinx3: basepeak = yes

C++ benchmarks:

444.namd: -xCORE-AVX2(pass 2) -prof-gen:threadsafe(pass 1)
-ipo(pass 2) -O3(pass 2) -no-prec-div(pass 2)
-par-num-threads=1(pass 1) -prof-use(pass 2) -fno-alias
-auto-ilp32

447.dealII: basepeak = yes

450.soplex: basepeak = yes

453.povray: -xCORE-AVX2(pass 2) -prof-gen:threadsafe(pass 1)
-ipo(pass 2) -O3(pass 2) -no-prec-div(pass 2)
-par-num-threads=1(pass 1) -prof-use(pass 2) -unroll4
-ansi-alias

Fortran benchmarks:

410.bwaves: basepeak = yes

416.gamess: -xCORE-AVX2(pass 2) -prof-gen:threadsafe(pass 1)
-ipo(pass 2) -O3(pass 2) -no-prec-div(pass 2)
-par-num-threads=1(pass 1) -prof-use(pass 2) -unroll2
-inline-level=0 -scalar-rep-

434.zeusmp: basepeak = yes

437.leslie3d: basepeak = yes

459.GemsFDTD: -xCORE-AVX2(pass 2) -prof-gen:threadsafe(pass 1)
-ipo(pass 2) -O3(pass 2) -no-prec-div(pass 2)
-par-num-threads=1(pass 1) -prof-use(pass 2) -unroll2
-inline-level=0 -opt-prefetch -parallel

465.tonto: -xCORE-AVX2(pass 2) -prof-gen:threadsafe(pass 1)
-ipo(pass 2) -O3(pass 2) -no-prec-div(pass 2)
-par-num-threads=1(pass 1) -prof-use(pass 2) -inline-calloc

Continued on next page



SPEC CFP2006 Result

Copyright 2006-2016 Standard Performance Evaluation Corporation

Cisco Systems

Cisco UCS C240 M4 (Intel Xeon E5-2650 v4, 2.20 GHz)

SPECfp2006 = 111

SPECfp_base2006 = 106

CPU2006 license: 9019

Test sponsor: Cisco Systems

Tested by: Cisco Systems

Test date: Oct-2016

Hardware Availability: Apr-2016

Software Availability: Dec-2015

Peak Optimization Flags (Continued)

465.tonto (continued):

`-opt-malloc-options=3 -auto -unroll4`

Benchmarks using both Fortran and C:

435.gromacs: basepeak = yes

436.cactusADM: basepeak = yes

454.calculix: `-xCORE-AVX2 -ipo -O3 -no-prec-div -auto-ilp32 -ansi-alias`

481.wrf: basepeak = yes

The flags files that were used to format this result can be browsed at

<http://www.spec.org/cpu2006/flags/Intel-ic16.0-official-linux64.html>

<http://www.spec.org/cpu2006/flags/Cisco-Platform-Settings-V1.2-revE.html>

You can also download the XML flags sources by saving the following links:

<http://www.spec.org/cpu2006/flags/Intel-ic16.0-official-linux64.xml>

<http://www.spec.org/cpu2006/flags/Cisco-Platform-Settings-V1.2-revE.xml>

SPEC and SPECfp are registered trademarks of the Standard Performance Evaluation Corporation. All other brand and product names appearing in this result are trademarks or registered trademarks of their respective holders.

For questions about this result, please contact the tester.
For other inquiries, please contact webmaster@spec.org.

Tested with SPEC CPU2006 v1.2.

Report generated on Tue Nov 15 16:08:44 2016 by SPEC CPU2006 PS/PDF formatter v6932.

Originally published on 15 November 2016.