



# SPEC® CINT2006 Result

Copyright 2006-2017 Standard Performance Evaluation Corporation

## Lenovo Global Technology

SPECint®\_rate2006 = 3740

ThinkSystem SR950  
(2.30 GHz, Intel Xeon Gold 6140M)

SPECint\_rate\_base2006 = 3550

CPU2006 license: 9017

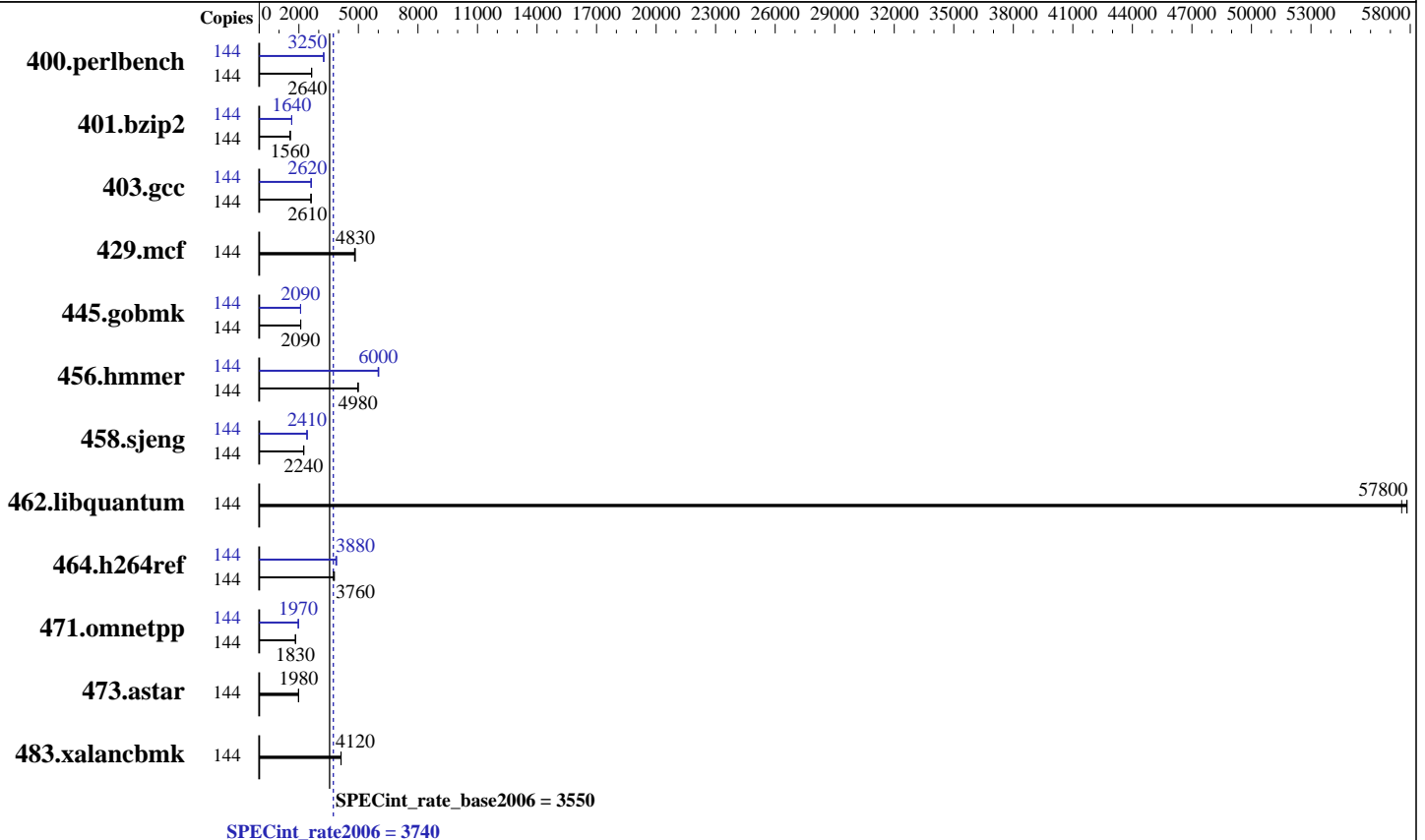
Test date: Oct-2017

Test sponsor: Lenovo Global Technology

Hardware Availability: Sep-2017

Tested by: Lenovo Global Technology

Software Availability: Apr-2017



### Hardware

CPU Name: Intel Xeon Gold 6140M  
 CPU Characteristics: Intel Turbo Boost Technology up to 3.70 GHz  
 CPU MHz: 2300  
 FPU: Integrated  
 CPU(s) enabled: 72 cores, 4 chips, 18 cores/chip, 2 threads/core  
 CPU(s) orderable: 2,4 chips  
 Primary Cache: 32 KB I + 32 KB D on chip per core  
 Secondary Cache: 1 MB I+D on chip per core  
 L3 Cache: 24.75 MB I+D on chip per chip  
 Other Cache: None  
 Memory: 1536 GB (48 x 32 GB 2Rx4 PC4-2666V-R)  
 Disk Subsystem: 800 GB tmpfs  
 Other Hardware: None

### Software

Operating System: SUSE Linux Enterprise Server 12 SP2 (x86\_64)  
 Kernel 4.4.21-69-default  
 Compiler: C/C++: Version 17.0.3.191 of Intel C/C++ Compiler for Linux  
 Auto Parallel: Yes  
 File System: tmpfs  
 System State: Run level 3 (multi-user)  
 Base Pointers: 32-bit  
 Peak Pointers: 32/64-bit  
 Other Software: Microquill SmartHeap V10.2



# SPEC CINT2006 Result

Copyright 2006-2017 Standard Performance Evaluation Corporation

## Lenovo Global Technology

SPECint\_rate2006 = 3740

ThinkSystem SR950  
(2.30 GHz, Intel Xeon Gold 6140M)

SPECint\_rate\_base2006 = 3550

CPU2006 license: 9017

Test date: Oct-2017

Test sponsor: Lenovo Global Technology

Hardware Availability: Sep-2017

Tested by: Lenovo Global Technology

Software Availability: Apr-2017

## Results Table

Benchmark	Base							Peak						
	Copies	Seconds	Ratio	Seconds	Ratio	Seconds	Ratio	Copies	Seconds	Ratio	Seconds	Ratio	Seconds	Ratio
400.perlbench	144	533	2640	<u>533</u>	<u>2640</u>	534	2640	144	432	3250	434	3240	<u>433</u>	<u>3250</u>
401.bzip2	144	<u>888</u>	<u>1560</u>	889	1560	888	1570	144	847	1640	850	1640	<u>847</u>	<u>1640</u>
403.gcc	144	443	2610	<u>444</u>	<u>2610</u>	444	2610	144	<u>443</u>	<u>2620</u>	442	2620	443	2620
429.mcf	144	273	4810	272	4830	<u>272</u>	<u>4830</u>	144	273	4810	272	4830	<u>272</u>	<u>4830</u>
445.gobmk	144	723	2090	722	2090	<u>722</u>	<u>2090</u>	144	725	2080	<u>724</u>	<u>2090</u>	724	2090
456.hammer	144	270	4970	269	4990	<u>270</u>	<u>4980</u>	144	224	6000	223	6030	<u>224</u>	<u>6000</u>
458.sjeng	144	777	2240	<u>777</u>	<u>2240</u>	776	2240	144	723	2410	722	2410	<u>723</u>	<u>2410</u>
462.libquantum	144	51.6	57800	51.8	57600	<u>51.6</u>	<u>57800</u>	144	51.6	57800	51.8	57600	<u>51.6</u>	<u>57800</u>
464.h264ref	144	852	3740	841	3790	<u>848</u>	<u>3760</u>	144	<u>820</u>	<u>3880</u>	817	3900	825	3860
471.omnetpp	144	493	1830	491	1830	<u>492</u>	<u>1830</u>	144	<u>456</u>	<u>1970</u>	456	1970	456	1970
473.astar	144	510	1980	509	1990	<u>510</u>	<u>1980</u>	144	510	1980	509	1990	<u>510</u>	<u>1980</u>
483.xalancbmk	144	241	4130	241	4120	<u>241</u>	<u>4120</u>	144	241	4130	241	4120	<u>241</u>	<u>4120</u>

Results appear in the order in which they were run. Bold underlined text indicates a median measurement.

## Submit Notes

The numactl mechanism was used to bind copies to processors. The config file option 'submit' was used to generate numactl commands to bind each copy to a specific processor. For details, please see the config file.

## Operating System Notes

```
Stack size set to unlimited using "ulimit -s unlimited"
Tmpfs filesystem can be set with:
mount -t tmpfs -o size=800g tmpfs /home
Process tuning setting:
echo 50000 > /proc/sys/kernel/sched_cfs_bandwidth_slice_us
echo 240000000 > /proc/sys/kernel/sched_latency_ns
echo 5000000 > /proc/sys/kernel/sched_migration_cost_ns
echo 100000000 > /proc/sys/kernel/sched_min_granularity_ns
echo 150000000 > /proc/sys/kernel/sched_wakeup_granularity_ns
```

## Platform Notes

```
BIOS configuration:
Choose Operating Mode set to Maximum Performance
SNC set to Enable
DCU Streamer Prefetcher set to Disable
Stale AtoS set to Enable
LLC dead line alloc set to Disable
Sysinfo program /home/cpu2006-1.2-ic17.0u3/config/sysinfo.rev6993
Revision 6993 of 2015-11-06 (b5e8d4b4eb51ed28d7f98696cbe290c1)
running on linux-ciok Sun Oct 29 16:36:08 2017
Continued on next page
```



# SPEC CINT2006 Result

Copyright 2006-2017 Standard Performance Evaluation Corporation

## Lenovo Global Technology

SPECint\_rate2006 = 3740

ThinkSystem SR950  
(2.30 GHz, Intel Xeon Gold 6140M)

SPECint\_rate\_base2006 = 3550

CPU2006 license: 9017

Test date: Oct-2017

Test sponsor: Lenovo Global Technology

Hardware Availability: Sep-2017

Tested by: Lenovo Global Technology

Software Availability: Apr-2017

### Platform Notes (Continued)

This section contains SUT (System Under Test) info as seen by some common utilities. To remove or add to this section, see: <http://www.spec.org/cpu2006/Docs/config.html#sysinfo>

From /proc/cpuinfo

```

model name      : Intel(R) Xeon(R) Gold 6140M CPU @ 2.30GHz
 4 "physical id"s (chips)
 144 "processors"
cores, siblings (Caution: counting these is hw and system dependent. The following excerpts from /proc/cpuinfo might not be reliable. Use with caution.)
  cpu cores      : 18
  siblings       : 36
  physical 0:    cores 0 1 2 3 4 8 9 10 11 16 17 18 19 20 24 25 26 27
  physical 1:    cores 0 1 2 3 4 8 9 10 11 16 17 18 19 20 24 25 26 27
  physical 2:    cores 0 1 2 3 4 8 9 10 11 16 17 18 19 20 24 25 26 27
  physical 3:    cores 0 1 2 3 4 8 9 10 11 16 17 18 19 20 24 25 26 27
cache size      : 25344 KB

```

From /proc/meminfo

```

MemTotal:      1584766272 kB
HugePages_Total:      0
Hugepagesize:    2048 kB

```

From /etc/\*release\* /etc/\*version\*

```

SuSE-release:
SUSE Linux Enterprise Server 12 (x86_64)
VERSION = 12
PATCHLEVEL = 2
# This file is deprecated and will be removed in a future service pack or
release.
# Please check /etc/os-release for details about this release.
os-release:
NAME="SLES"
VERSION="12-SP2"
VERSION_ID="12.2"
PRETTY_NAME="SUSE Linux Enterprise Server 12 SP2"
ID="sles"
ANSI_COLOR="0;32"
CPE_NAME="cpe:/o:suse:sles:12:sp2"

```

uname -a:

```

Linux linux-ciok 4.4.21-69-default #1 SMP Tue Oct 25 10:58:20 UTC 2016
(9464f67) x86_64 x86_64 x86_64 GNU/Linux

```

run-level 3 Oct 29 16:31

SPEC is set to: /home/cpu2006-1.2-ic17.0u3

```

Filesystem      Type      Size      Used      Avail      Use%      Mounted on
tmpfs           tmpfs    800G      5.0G     796G        1%      /home

```

Additional information from dmidecode:

Continued on next page



# SPEC CINT2006 Result

Copyright 2006-2017 Standard Performance Evaluation Corporation

Lenovo Global Technology

SPECint\_rate2006 = 3740

ThinkSystem SR950  
(2.30 GHz, Intel Xeon Gold 6140M)

SPECint\_rate\_base2006 = 3550

CPU2006 license: 9017

Test date: Oct-2017

Test sponsor: Lenovo Global Technology

Hardware Availability: Sep-2017

Tested by: Lenovo Global Technology

Software Availability: Apr-2017

## Platform Notes (Continued)

Warning: Use caution when you interpret this section. The 'dmidecode' program reads system data which is "intended to allow hardware to be accurately determined", but the intent may not be met, as there are frequent changes to hardware, firmware, and the "DMTF SMBIOS" standard.

BIOS Lenovo -[PSE105X-1.00]- 08/17/2017

Memory:

48x NO DIMM NO DIMM

48x Samsung M393A4K40BB2-CTD 32 GB 2 rank 2666 MHz

(End of data from sysinfo program)

## General Notes

Environment variables set by runspec before the start of the run:

LD\_LIBRARY\_PATH = "/home/cpu2006-1.2-ic17.0u3/lib/ia32:/home/cpu2006-1.2-ic17.0u3/lib/intel64:/home/cpu2006-1.2-ic17.0u3/sh10.2"

Binaries compiled on a system with 1x Intel Core i7-4790 CPU + 32GB RAM memory using Redhat Enterprise Linux 7.2

Transparent Huge Pages enabled by default

Filesystem page cache cleared with:

shell invocation of 'sync; echo 3 > /proc/sys/vm/drop\_caches' prior to run

runspec command invoked through numactl i.e.:

numactl --interleave=all runspec <etc>

## Base Compiler Invocation

C benchmarks:

icc -m32 -L/opt/intel/compilers\_and\_libraries\_2017/linux/lib/ia32

C++ benchmarks:

icpc -m32 -L/opt/intel/compilers\_and\_libraries\_2017/linux/lib/ia32

## Base Portability Flags

400.perlbench: -D\_FILE\_OFFSET\_BITS=64 -DSPEC\_CPU\_LINUX\_IA32

401.bzip2: -D\_FILE\_OFFSET\_BITS=64

403.gcc: -D\_FILE\_OFFSET\_BITS=64

429.mcf: -D\_FILE\_OFFSET\_BITS=64

445.gobmk: -D\_FILE\_OFFSET\_BITS=64

456.hmmer: -D\_FILE\_OFFSET\_BITS=64

458.sjeng: -D\_FILE\_OFFSET\_BITS=64

462.libquantum: -D\_FILE\_OFFSET\_BITS=64 -DSPEC\_CPU\_LINUX

464.h264ref: -D\_FILE\_OFFSET\_BITS=64

471.omnetpp: -D\_FILE\_OFFSET\_BITS=64

Continued on next page

Standard Performance Evaluation Corporation

info@spec.org

http://www.spec.org/

Page 4



# SPEC CINT2006 Result

Copyright 2006-2017 Standard Performance Evaluation Corporation

Lenovo Global Technology

SPECint\_rate2006 = 3740

ThinkSystem SR950  
(2.30 GHz, Intel Xeon Gold 6140M)

SPECint\_rate\_base2006 = 3550

CPU2006 license: 9017

Test date: Oct-2017

Test sponsor: Lenovo Global Technology

Hardware Availability: Sep-2017

Tested by: Lenovo Global Technology

Software Availability: Apr-2017

## Base Portability Flags (Continued)

473.astar: -D\_FILE\_OFFSET\_BITS=64  
483.xalancbmk: -D\_FILE\_OFFSET\_BITS=64 -DSPEC\_CPU\_LINUX

## Base Optimization Flags

C benchmarks:

-xCORE-AVX512 -ipo -O3 -no-prec-div -qopt-prefetch  
-qopt-mem-layout-trans=3

C++ benchmarks:

-xCORE-AVX512 -ipo -O3 -no-prec-div -qopt-prefetch  
-qopt-mem-layout-trans=3 -Wl,-z,muldefs -L/shl0.2 -lsmartheap

## Base Other Flags

C benchmarks:

403.gcc: -Dalloca=\_alloca

## Peak Compiler Invocation

C benchmarks (except as noted below):

icc -m32 -L/opt/intel/compilers\_and\_libraries\_2017/linux/lib/ia32

400.perlbench: icc -m64

401.bzip2: icc -m64

456.hmmer: icc -m64

458.sjeng: icc -m64

C++ benchmarks:

icpc -m32 -L/opt/intel/compilers\_and\_libraries\_2017/linux/lib/ia32

## Peak Portability Flags

400.perlbench: -DSPEC\_CPU\_LP64 -DSPEC\_CPU\_LINUX\_X64

401.bzip2: -DSPEC\_CPU\_LP64

403.gcc: -D\_FILE\_OFFSET\_BITS=64

429.mcf: -D\_FILE\_OFFSET\_BITS=64

Continued on next page



# SPEC CINT2006 Result

Copyright 2006-2017 Standard Performance Evaluation Corporation

Lenovo Global Technology

SPECint\_rate2006 = 3740

ThinkSystem SR950  
(2.30 GHz, Intel Xeon Gold 6140M)

SPECint\_rate\_base2006 = 3550

CPU2006 license: 9017

Test date: Oct-2017

Test sponsor: Lenovo Global Technology

Hardware Availability: Sep-2017

Tested by: Lenovo Global Technology

Software Availability: Apr-2017

## Peak Portability Flags (Continued)

445.gobmk: -D\_FILE\_OFFSET\_BITS=64  
 456.hmmer: -DSPEC\_CPU\_LP64  
 458.sjeng: -DSPEC\_CPU\_LP64  
 462.libquantum: -D\_FILE\_OFFSET\_BITS=64 -DSPEC\_CPU\_LINUX  
 464.h264ref: -D\_FILE\_OFFSET\_BITS=64  
 471.omnetpp: -D\_FILE\_OFFSET\_BITS=64  
 473.astar: -D\_FILE\_OFFSET\_BITS=64  
 483.xalancbmk: -D\_FILE\_OFFSET\_BITS=64 -DSPEC\_CPU\_LINUX

## Peak Optimization Flags

C benchmarks:

400.perlbench: -prof-gen(pass 1) -prof-use(pass 2) -xCORE-AVX512(pass 2)  
 -par-num-threads=1(pass 1) -ipo(pass 2) -O3(pass 2)  
 -no-prec-div(pass 2) -auto-ilp32 -qopt-mem-layout-trans=3

401.bzip2: -prof-gen(pass 1) -prof-use(pass 2) -xCORE-AVX512(pass 2)  
 -par-num-threads=1(pass 1) -ipo(pass 2) -O3(pass 2)  
 -no-prec-div(pass 2) -qopt-prefetch -auto-ilp32  
 -qopt-mem-layout-trans=3

403.gcc: -xCORE-AVX512 -ipo -O3 -no-prec-div  
 -qopt-mem-layout-trans=3

429.mcf: basepeak = yes

445.gobmk: -prof-gen(pass 1) -prof-use(pass 2) -xCORE-AVX512(pass 2)  
 -par-num-threads=1(pass 1) -ipo(pass 2) -O3(pass 2)  
 -no-prec-div(pass 2) -qopt-mem-layout-trans=3

456.hmmer: -xCORE-AVX512 -ipo -O3 -no-prec-div -unroll2 -auto-ilp32  
 -qopt-mem-layout-trans=3

458.sjeng: -prof-gen(pass 1) -prof-use(pass 2) -xCORE-AVX512(pass 2)  
 -par-num-threads=1(pass 1) -ipo(pass 2) -O3(pass 2)  
 -no-prec-div(pass 2) -unroll4 -auto-ilp32  
 -qopt-mem-layout-trans=3

462.libquantum: basepeak = yes

464.h264ref: -prof-gen(pass 1) -prof-use(pass 2) -xCORE-AVX512(pass 2)  
 -par-num-threads=1(pass 1) -ipo(pass 2) -O3(pass 2)  
 -no-prec-div(pass 2) -unroll2 -qopt-mem-layout-trans=3

C++ benchmarks:

Continued on next page



# SPEC CINT2006 Result

Copyright 2006-2017 Standard Performance Evaluation Corporation

Lenovo Global Technology

SPECint\_rate2006 = 3740

ThinkSystem SR950  
(2.30 GHz, Intel Xeon Gold 6140M)

SPECint\_rate\_base2006 = 3550

CPU2006 license: 9017

Test date: Oct-2017

Test sponsor: Lenovo Global Technology

Hardware Availability: Sep-2017

Tested by: Lenovo Global Technology

Software Availability: Apr-2017

## Peak Optimization Flags (Continued)

471.omnetpp: -prof-gen(pass 1) -prof-use(pass 2) -xCORE-AVX512(pass 2)  
-par-num-threads=1(pass 1) -ipo(pass 2) -O3(pass 2)  
-no-prec-div(pass 2)  
-qopt-ra-region-strategy=block  
-qopt-mem-layout-trans=3 -Wl,-z,muldefs  
-L/sh10.2 -lsmartheap

473.astar: basepeak = yes

483.xalancbmk: basepeak = yes

## Peak Other Flags

C benchmarks:

403.gcc: -Dalloca=\_alloca

The flags files that were used to format this result can be browsed at

<http://www.spec.org/cpu2006/flags/Intel-ic17.0-official-linux64-revF.html>

<http://www.spec.org/cpu2006/flags/Lenovo-Platform-Flags-V1.2-SKL-F.html>

You can also download the XML flags sources by saving the following links:

<http://www.spec.org/cpu2006/flags/Intel-ic17.0-official-linux64-revF.xml>

<http://www.spec.org/cpu2006/flags/Lenovo-Platform-Flags-V1.2-SKL-F.xml>

SPEC and SPECint are registered trademarks of the Standard Performance Evaluation Corporation. All other brand and product names appearing in this result are trademarks or registered trademarks of their respective holders.

For questions about this result, please contact the tester.  
For other inquiries, please contact [webmaster@spec.org](mailto:webmaster@spec.org).

Tested with SPEC CPU2006 v1.2.

Report generated on Thu Dec 21 17:10:54 2017 by SPEC CPU2006 PS/PDF formatter v6932.

Originally published on 21 December 2017.