



SPEC® CINT2006 Result

Copyright 2006-2015 Standard Performance Evaluation Corporation

Huawei

SPECint®2006 = 58.9

Huawei CH121 V3 (Intel Xeon E5-2670 v3)

SPECint_base2006 = 56.7

CPU2006 license: 3175

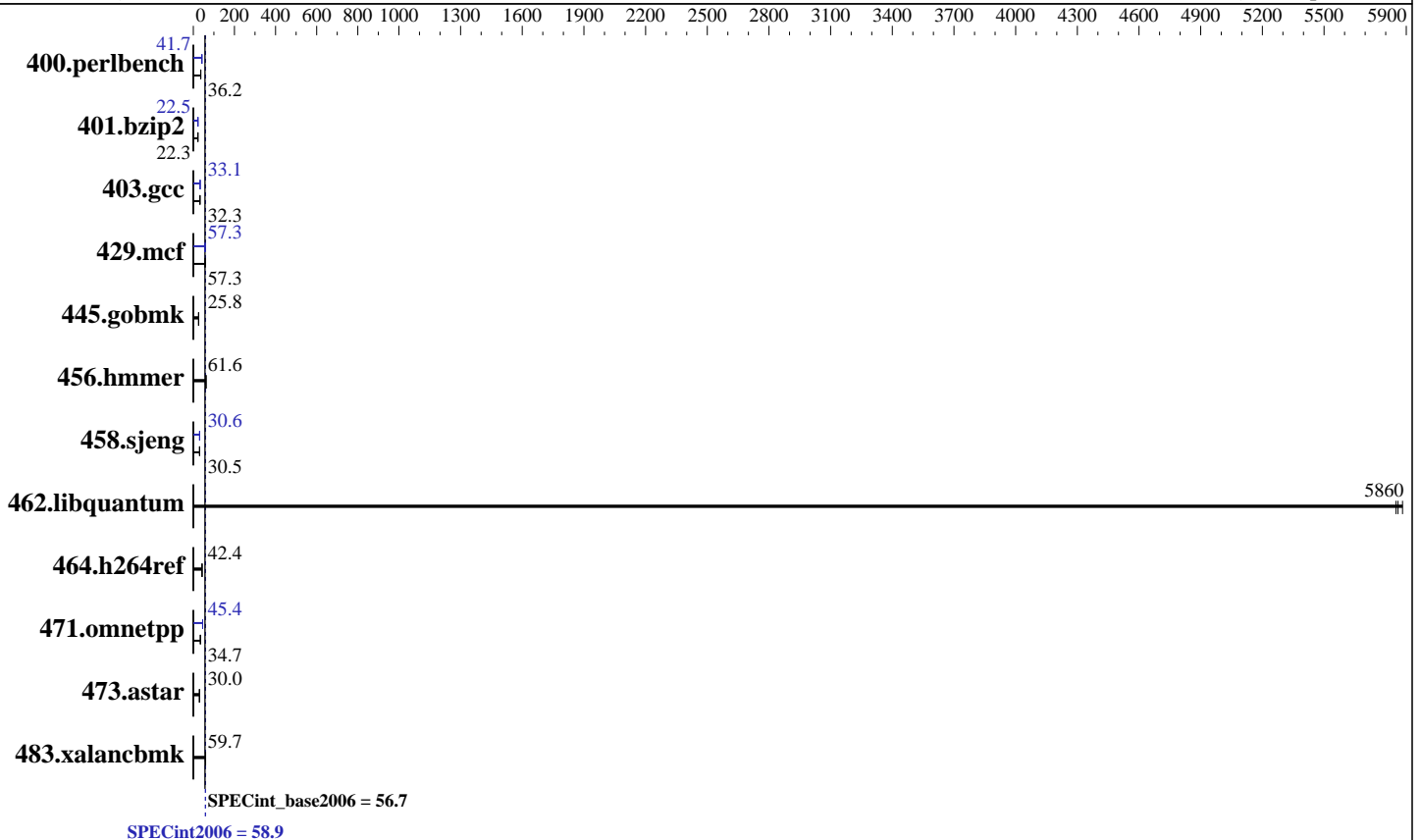
Test sponsor: Huawei

Tested by: Huawei

Test date: Jan-2015

Hardware Availability: Sep-2014

Software Availability: Sep-2014



Hardware

CPU Name: Intel Xeon E5-2670 v3
 CPU Characteristics: Intel Turbo Boost Technology up to 3.10 GHz
 CPU MHz: 2300
 FPU: Integrated
 CPU(s) enabled: 24 cores, 2 chips, 12 cores/chip
 CPU(s) orderable: 1,2 chip
 Primary Cache: 32 KB I + 32 KB D on chip per core
 Secondary Cache: 256 KB I+D on chip per core
 L3 Cache: 30 MB I+D on chip per chip
 Other Cache: None
 Memory: 256 GB (16 x 16 GB 2Rx4 PC4-2133P-R)
 Disk Subsystem: 1 x 500 GB SATA, 7200 RPM
 Other Hardware: None

Software

Operating System: Red Hat Enterprise Linux Server release 7.0 (Maipo)
 3.10.0-123.el7.x86_64
 Compiler: C/C++: Version 15.0.0.090 of Intel C++ Studio XE for Linux
 Auto Parallel: Yes
 File System: ext4
 System State: Run level 3 (multi-user)
 Base Pointers: 32/64-bit
 Peak Pointers: 32/64-bit
 Other Software: Microquill SmartHeap V10.0



SPEC CINT2006 Result

Copyright 2006-2015 Standard Performance Evaluation Corporation

Huawei

SPECint2006 = 58.9

Huawei CH121 V3 (Intel Xeon E5-2670 v3)

SPECint_base2006 = 56.7

CPU2006 license: 3175
Test sponsor: Huawei
Tested by: Huawei

Test date: Jan-2015
Hardware Availability: Sep-2014
Software Availability: Sep-2014

Results Table

Benchmark	Base						Peak					
	Seconds	Ratio	Seconds	Ratio	Seconds	Ratio	Seconds	Ratio	Seconds	Ratio	Seconds	Ratio
400.perlbench	<u>270</u>	<u>36.2</u>	270	36.2	271	36.1	<u>234</u>	<u>41.7</u>	234	41.7	236	41.5
401.bzip2	<u>433</u>	<u>22.3</u>	433	22.3	432	22.3	429	22.5	<u>430</u>	<u>22.5</u>	430	22.4
403.gcc	<u>250</u>	<u>32.3</u>	249	32.3	250	32.2	243	33.1	<u>243</u>	<u>33.1</u>	244	33.0
429.mcf	157	58.0	<u>159</u>	<u>57.3</u>	161	56.6	160	57.1	<u>159</u>	<u>57.3</u>	159	57.5
445.gobmk	<u>407</u>	<u>25.8</u>	406	25.8	408	25.7	<u>407</u>	<u>25.8</u>	406	25.8	408	25.7
456.hammer	<u>152</u>	<u>61.6</u>	152	61.5	152	61.6	<u>152</u>	<u>61.6</u>	152	61.5	152	61.6
458.sjeng	397	30.5	<u>397</u>	<u>30.5</u>	397	30.5	395	30.6	395	30.6	<u>395</u>	<u>30.6</u>
462.libquantum	3.54	5850	3.52	5880	<u>3.54</u>	<u>5860</u>	3.54	5850	3.52	5880	<u>3.54</u>	<u>5860</u>
464.h264ref	520	42.6	524	42.3	<u>522</u>	<u>42.4</u>	520	42.6	524	42.3	<u>522</u>	<u>42.4</u>
471.omnetpp	184	34.0	180	34.7	<u>180</u>	<u>34.7</u>	<u>138</u>	<u>45.4</u>	137	45.5	138	45.1
473.astar	236	29.8	233	30.1	<u>234</u>	<u>30.0</u>	236	29.8	233	30.1	<u>234</u>	<u>30.0</u>
483.xalancbmk	116	59.7	<u>116</u>	<u>59.7</u>	115	59.7	116	59.7	<u>116</u>	<u>59.7</u>	115	59.7

Results appear in the order in which they were run. Bold underlined text indicates a median measurement.

Submit Notes

The config file option 'submit' was used.

Operating System Notes

Stack size set to unlimited using "ulimit -s unlimited"

Platform Notes

BIOS configuration:
Set Power Efficiency Mode to Custom
Set Snoop Mode to ES
Set Hyper-Threading to Disabled
Baseboard Management Controller used to adjust the fan speed to 100%
Sysinfo program /spec15/config/sysinfo.rev6914
\$Rev: 6914 \$ \$Date:: 2014-06-25 # \$ e3fbb8667b5a285932ceab81e28219e1
running on localhost.localdomain Sat Jan 18 22:36:07 2014

This section contains SUT (System Under Test) info as seen by some common utilities. To remove or add to this section, see:
<http://www.spec.org/cpu2006/Docs/config.html#sysinfo>

From /proc/cpuinfo
model name : Intel(R) Xeon(R) CPU E5-2670 v3 @ 2.30GHz
2 "physical id"s (chips)
24 "processors"
cores, siblings (Caution: counting these is hw and system dependent. The following excerpts from /proc/cpuinfo might not be reliable. Use with
Continued on next page



SPEC CINT2006 Result

Copyright 2006-2015 Standard Performance Evaluation Corporation

Huawei

SPECint2006 = 58.9

Huawei CH121 V3 (Intel Xeon E5-2670 v3)

SPECint_base2006 = 56.7

CPU2006 license: 3175
Test sponsor: Huawei
Tested by: Huawei

Test date: Jan-2015
Hardware Availability: Sep-2014
Software Availability: Sep-2014

Platform Notes (Continued)

```
caution.)
  cpu cores : 12
  siblings  : 12
  physical 0: cores 0 1 2 3 4 5 8 9 10 11 12 13
  physical 1: cores 0 1 2 3 4 5 8 9 10 11 12 13
cache size : 30720 KB
```

```
From /proc/meminfo
MemTotal:      263720556 kB
HugePages_Total:      0
Hugepagesize:    2048 kB
```

```
From /etc/*release* /etc/*version*
os-release:
NAME="Red Hat Enterprise Linux Server"
VERSION="7.0 (Maipo)"
ID="rhel"
ID_LIKE="fedora"
VERSION_ID="7.0"
PRETTY_NAME="Red Hat Enterprise Linux Server 7.0 (Maipo)"
ANSI_COLOR="0;31"
CPE_NAME="cpe:/o:redhat:enterprise_linux:7.0:GA:server"
redhat-release: Red Hat Enterprise Linux Server release 7.0 (Maipo)
system-release: Red Hat Enterprise Linux Server release 7.0 (Maipo)
system-release-cpe: cpe:/o:redhat:enterprise_linux:7.0:ga:server
```

```
uname -a:
Linux localhost.localdomain 3.10.0-123.el7.x86_64 #1 SMP Mon May 5 11:16:57
EDT 2014 x86_64 x86_64 x86_64 GNU/Linux
```

run-level 3 Jan 18 16:53

```
SPEC is set to: /spec15
Filesystem      Type  Size  Used Avail Use% Mounted on
/dev/mapper/rhel-root ext4  439G   21G  396G   5% /
```

Additional information from dmidecode:

Warning: Use caution when you interpret this section. The 'dmidecode' program reads system data which is "intended to allow hardware to be accurately determined", but the intent may not be met, as there are frequent changes to hardware, firmware, and the "DMTF SMBIOS" standard.

```
BIOS Insyde Corp. 1.19 10/10/2014
Memory:
8x NO DIMM NO DIMM 3 rank
8x Samsung M393A2G40DB0-CPB 16 GB 1 rank 2133 MHz
8x Samsung M393A2G40DB0-CPB 16 GB 2 rank 2133 MHz
```

(End of data from sysinfo program)



SPEC CINT2006 Result

Copyright 2006-2015 Standard Performance Evaluation Corporation

Huawei

SPECint2006 = 58.9

Huawei CH121 V3 (Intel Xeon E5-2670 v3)

SPECint_base2006 = 56.7

CPU2006 license: 3175

Test sponsor: Huawei

Tested by: Huawei

Test date: Jan-2015

Hardware Availability: Sep-2014

Software Availability: Sep-2014

General Notes

Environment variables set by runspec before the start of the run:

KMP_AFFINITY = "granularity=fine,compact,1,0"

LD_LIBRARY_PATH = "/spec15/libs/32:/spec15/libs/64:/spec15/sh"

OMP_NUM_THREADS = "24"

Binaries compiled on a system with 1x Core i5-4670K CPU + 16GB memory using RedHat EL 7.0

Transparent Huge Pages enabled with:

echo always > /sys/kernel/mm/transparent_hugepage/enabled

runspec command invoked through numactl i.e.:

numactl --interleave=all runspec <etc>

The Huawei CH121 V3 and Huawei CH222 V3 models are electronically equivalent.

The results have been measured on a Huawei CH121 V3 model.

Base Compiler Invocation

C benchmarks:

icc -m64

C++ benchmarks:

icpc -m64

Base Portability Flags

400.perlbench: -DSPEC_CPU_LP64 -DSPEC_CPU_LINUX_X64

401.bzip2: -DSPEC_CPU_LP64

403.gcc: -DSPEC_CPU_LP64

429.mcf: -DSPEC_CPU_LP64

445.gobmk: -DSPEC_CPU_LP64

456.hmmer: -DSPEC_CPU_LP64

458.sjeng: -DSPEC_CPU_LP64

462.libquantum: -DSPEC_CPU_LP64 -DSPEC_CPU_LINUX

464.h264ref: -DSPEC_CPU_LP64

471.omnetpp: -DSPEC_CPU_LP64

473.astar: -DSPEC_CPU_LP64

483.xalancbmk: -DSPEC_CPU_LP64 -DSPEC_CPU_LINUX

Base Optimization Flags

C benchmarks:

-xCORE-AVX2 -ipo -O3 -no-prec-div -parallel -opt-prefetch -auto-p32

C++ benchmarks:

-xCORE-AVX2 -ipo -O3 -no-prec-div -opt-prefetch -auto-p32

-Wl,-z,muldefs -L/sh -lsmarthheap64



SPEC CINT2006 Result

Copyright 2006-2015 Standard Performance Evaluation Corporation

Huawei	SPECint2006 =	58.9
Huawei CH121 V3 (Intel Xeon E5-2670 v3)	SPECint_base2006 =	56.7

CPU2006 license: 3175	Test date: Jan-2015
Test sponsor: Huawei	Hardware Availability: Sep-2014
Tested by: Huawei	Software Availability: Sep-2014

Base Other Flags

C benchmarks:

403.gcc: -Dalloca=_alloca

Peak Compiler Invocation

C benchmarks (except as noted below):

icc -m64

400.perlbench: icc -m32 -L/opt/intel/composer_xe_2015/lib/ia32

C++ benchmarks (except as noted below):

icpc -m64

471.omnetpp: icpc -m32 -L/opt/intel/composer_xe_2015/lib/ia32

Peak Portability Flags

400.perlbench: -DSPEC_CPU_LINUX_IA32
401.bzip2: -DSPEC_CPU_LP64
403.gcc: -DSPEC_CPU_LP64
429.mcf: -DSPEC_CPU_LP64
445.gobmk: -DSPEC_CPU_LP64
456.hmmer: -DSPEC_CPU_LP64
458.sjeng: -DSPEC_CPU_LP64
462.libquantum: -DSPEC_CPU_LP64 -DSPEC_CPU_LINUX
464.h264ref: -DSPEC_CPU_LP64
473.astar: -DSPEC_CPU_LP64
483.xalancbmk: -DSPEC_CPU_LP64 -DSPEC_CPU_LINUX

Peak Optimization Flags

C benchmarks:

400.perlbench: -xCORE-AVX2(pass 2) -prof-gen(pass 1) -ipo(pass 2)
-O3(pass 2) -no-prec-div(pass 2) -prof-use(pass 2)
-opt-prefetch -ansi-alias

401.bzip2: -xCORE-AVX2(pass 2) -prof-gen(pass 1) -ipo(pass 2)
-O3(pass 2) -no-prec-div -prof-use(pass 2) -auto-ilp32
-opt-prefetch -ansi-alias

403.gcc: -xCORE-AVX2 -ipo -O3 -no-prec-div -inline-calloc
-opt-malloc-options=3 -auto-ilp32

Continued on next page



SPEC CINT2006 Result

Copyright 2006-2015 Standard Performance Evaluation Corporation

Huawei	SPECint2006 =	58.9
Huawei CH121 V3 (Intel Xeon E5-2670 v3)	SPECint_base2006 =	56.7

CPU2006 license: 3175	Test date: Jan-2015
Test sponsor: Huawei	Hardware Availability: Sep-2014
Tested by: Huawei	Software Availability: Sep-2014

Peak Optimization Flags (Continued)

429.mcf: -xCORE-AVX2 -ipo -O3 -no-prec-div -parallel
 -opt-prefetch -auto-p32

445.gobmk: basepeak = yes

456.hmmmer: basepeak = yes

458.sjeng: -xCORE-AVX2(pass 2) -prof-gen(pass 1) -ipo(pass 2)
 -O3(pass 2) -no-prec-div(pass 2) -prof-use(pass 2)
 -unroll4

462.libquantum: basepeak = yes

464.h264ref: basepeak = yes

C++ benchmarks:

471.omnetpp: -xCORE-AVX2(pass 2) -prof-gen(pass 1) -ipo(pass 2)
 -O3(pass 2) -no-prec-div(pass 2) -prof-use(pass 2)
 -opt-ra-region-strategy=block -ansi-alias
 -Wl,-z,muldefs -L/sh -lsmartheap

473.astar: basepeak = yes

483.xalancbmk: basepeak = yes

Peak Other Flags

C benchmarks:

403.gcc: -Dalloca=_alloca

The flags files that were used to format this result can be browsed at

<http://www.spec.org/cpu2006/flags/Intel-ic15.0-official-linux64.html>

<http://www.spec.org/cpu2006/flags/Huawei-Platform-Settings-HASWELL-V1.1.html>

You can also download the XML flags sources by saving the following links:

<http://www.spec.org/cpu2006/flags/Intel-ic15.0-official-linux64.xml>

<http://www.spec.org/cpu2006/flags/Huawei-Platform-Settings-HASWELL-V1.1.xml>



SPEC CINT2006 Result

Copyright 2006-2015 Standard Performance Evaluation Corporation

Huawei

SPECint2006 = 58.9

Huawei CH121 V3 (Intel Xeon E5-2670 v3)

SPECint_base2006 = 56.7

CPU2006 license: 3175

Test sponsor: Huawei

Tested by: Huawei

Test date: Jan-2015

Hardware Availability: Sep-2014

Software Availability: Sep-2014

SPEC and SPECint are registered trademarks of the Standard Performance Evaluation Corporation. All other brand and product names appearing in this result are trademarks or registered trademarks of their respective holders.

For questions about this result, please contact the tester.
For other inquiries, please contact webmaster@spec.org.

Tested with SPEC CPU2006 v1.2.
Report generated on Tue Jan 27 13:33:57 2015 by SPEC CPU2006 PS/PDF formatter v6932.
Originally published on 27 January 2015.