



SPEC® CINT2006 Result

Copyright 2006-2016 Standard Performance Evaluation Corporation

Dell Inc.

SPECint®2006 = 72.1

PowerEdge T630 (Intel Xeon E5-2697A v4, 2.60 GHz)

SPECint_base2006 = 68.7

CPU2006 license: 55

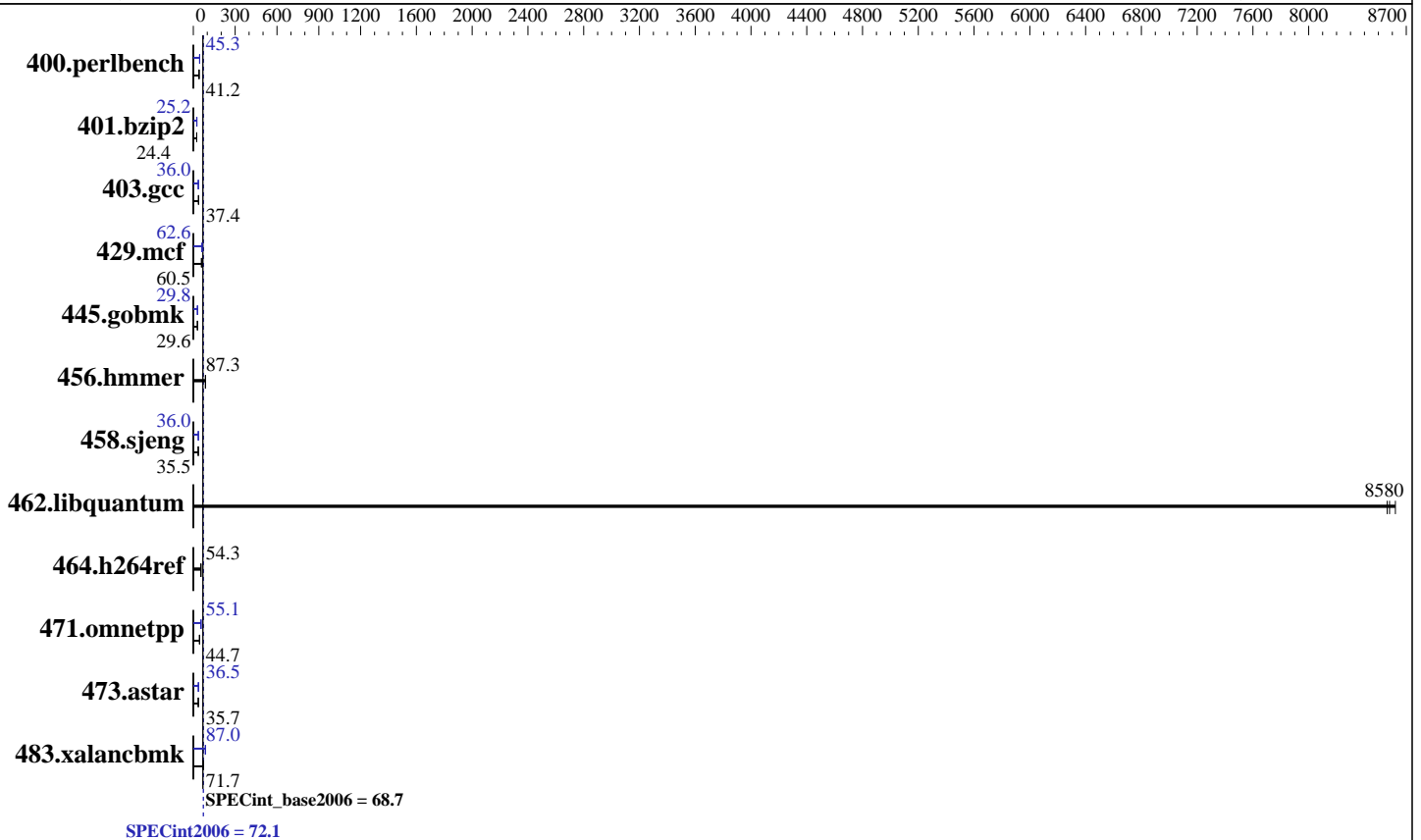
Test date: Jun-2016

Test sponsor: Dell Inc.

Hardware Availability: Jun-2016

Tested by: Dell Inc.

Software Availability: Mar-2016



Hardware

CPU Name: Intel Xeon E5-2697A v4
 CPU Characteristics: Intel Turbo Boost Technology up to 3.60 GHz
 CPU MHz: 2600
 FPU: Integrated
 CPU(s) enabled: 32 cores, 2 chips, 16 cores/chip, 2 threads/core
 CPU(s) orderable: 1,2 chips
 Primary Cache: 32 KB I + 32 KB D on chip per core
 Secondary Cache: 256 KB I+D on chip per core
 L3 Cache: 40 MB I+D on chip per chip
 Other Cache: None
 Memory: 512 GB (16 x 32 GB 2Rx8 PC4-2400T-R)
 Disk Subsystem: 1 x 400 GB SATA SSD
 Other Hardware: None

Software

Operating System: Red Hat Enterprise Linux Server release 7.2 (Maipo)
 3.10.0-327.el7.x86_64
 Compiler: C/C++: Version 16.0.0.101 of Intel C++ Studio XE for Linux
 Auto Parallel: Yes
 File System: xfs
 System State: Run level 3 (multi-user)
 Base Pointers: 32/64-bit
 Peak Pointers: 32/64-bit
 Other Software: Microquill SmartHeap V10.2



SPEC CINT2006 Result

Copyright 2006-2016 Standard Performance Evaluation Corporation

Dell Inc.

SPECint2006 = 72.1

PowerEdge T630 (Intel Xeon E5-2697A v4, 2.60 GHz)

SPECint_base2006 = 68.7

CPU2006 license: 55

Test date: Jun-2016

Test sponsor: Dell Inc.

Hardware Availability: Jun-2016

Tested by: Dell Inc.

Software Availability: Mar-2016

Results Table

Benchmark	Base						Peak					
	Seconds	Ratio	Seconds	Ratio	Seconds	Ratio	Seconds	Ratio	Seconds	Ratio	Seconds	Ratio
400.perlbench	237	41.3	238	41.1	<u>237</u>	<u>41.2</u>	215	45.5	216	45.2	<u>216</u>	<u>45.3</u>
401.bzip2	397	24.3	<u>396</u>	<u>24.4</u>	396	24.4	<u>383</u>	<u>25.2</u>	384	25.2	383	25.2
403.gcc	215	37.5	<u>215</u>	<u>37.4</u>	215	37.4	<u>224</u>	<u>36.0</u>	222	36.3	226	35.6
429.mcf	144	63.1	160	57.2	<u>151</u>	<u>60.5</u>	<u>146</u>	<u>62.6</u>	146	62.5	144	63.2
445.gobmk	<u>354</u>	<u>29.6</u>	354	29.6	354	29.6	<u>352</u>	<u>29.8</u>	352	29.8	352	29.8
456.hammer	107	87.5	<u>107</u>	<u>87.3</u>	107	87.1	107	87.5	<u>107</u>	<u>87.3</u>	107	87.1
458.sjeng	340	35.5	<u>340</u>	<u>35.5</u>	340	35.5	<u>336</u>	<u>36.0</u>	336	36.0	336	36.0
462.libquantum	2.40	8620	2.42	8560	<u>2.41</u>	<u>8580</u>	2.40	8620	2.42	8560	<u>2.41</u>	<u>8580</u>
464.h264ref	408	54.2	407	54.4	<u>407</u>	<u>54.3</u>	408	54.2	407	54.4	<u>407</u>	<u>54.3</u>
471.omnetpp	<u>140</u>	<u>44.7</u>	140	44.5	140	44.7	114	54.7	<u>113</u>	<u>55.1</u>	113	55.2
473.astar	<u>196</u>	<u>35.7</u>	196	35.8	197	35.6	193	36.5	<u>192</u>	<u>36.5</u>	192	36.6
483.xalancbmk	96.2	71.7	<u>96.3</u>	<u>71.7</u>	96.5	71.5	79.2	87.1	79.5	86.8	<u>79.3</u>	<u>87.0</u>

Results appear in the order in which they were run. Bold underlined text indicates a median measurement.

Submit Notes

The config file option 'submit' was used.

Operating System Notes

Stack size set to unlimited using "ulimit -s unlimited"

Platform Notes

BIOS settings:

Snoop Mode set to Home Snoop

Virtualization Technology disabled

System Profile set to custom

CPU Performance set to Maximum Performance

C States set to Autonomous

C1E enabled

Energy Efficient Turbo disabled

Uncore Frequency set to Dynamic

Energy Efficiency Policy set to Performance

Memory Patrol Scrub disabled

Sysinfo program /root/cpu2006-1.2/config/sysinfo.rev6914

\$Rev: 6914 \$ \$Date:: 2014-06-25 # \$ e3fbb8667b5a285932ceab81e28219e1

running on localhost.localdomain Tue Jun 21 17:23:21 2016

This section contains SUT (System Under Test) info as seen by some common utilities. To remove or add to this section, see:

<http://www.spec.org/cpu2006/Docs/config.html#sysinfo>

Continued on next page

Standard Performance Evaluation Corporation

info@spec.org

<http://www.spec.org/>



SPEC CINT2006 Result

Copyright 2006-2016 Standard Performance Evaluation Corporation

Dell Inc.

SPECint2006 = 72.1

PowerEdge T630 (Intel Xeon E5-2697A v4, 2.60 GHz)

SPECint_base2006 = 68.7

CPU2006 license: 55

Test date: Jun-2016

Test sponsor: Dell Inc.

Hardware Availability: Jun-2016

Tested by: Dell Inc.

Software Availability: Mar-2016

Platform Notes (Continued)

```

From /proc/cpuinfo
model name : Intel(R) Xeon(R) CPU E5-2697A v4 @ 2.60GHz
 2 "physical id"s (chips)
 64 "processors"
cores, siblings (Caution: counting these is hw and system dependent. The
following excerpts from /proc/cpuinfo might not be reliable. Use with
caution.)
  cpu cores : 16
  siblings  : 32
 physical 0: cores 0 1 2 3 4 5 6 7 8 9 10 11 12 13 14 15
 physical 1: cores 0 1 2 3 4 5 6 7 8 9 10 11 12 13 14 15
cache size : 40960 KB

```

```

From /proc/meminfo
MemTotal:      528280404 kB
HugePages_Total:      0
Hugepagesize:    2048 kB

```

```

From /etc/*release* /etc/*version*
os-release:
NAME="Red Hat Enterprise Linux Server"
VERSION="7.2 (Maipo)"
ID="rhel"
ID_LIKE="fedora"
VERSION_ID="7.2"
PRETTY_NAME="Red Hat Enterprise Linux Server 7.2 (Maipo)"
ANSI_COLOR="0;31"
CPE_NAME="cpe:/o:redhat:enterprise_linux:7.2:GA:server"
redhat-release: Red Hat Enterprise Linux Server release 7.2 (Maipo)
system-release: Red Hat Enterprise Linux Server release 7.2 (Maipo)
system-release-cpe: cpe:/o:redhat:enterprise_linux:7.2:ga:server

```

```

uname -a:
Linux localhost.localdomain 3.10.0-327.el7.x86_64 #1 SMP Thu Oct 29 17:29:29
EDT 2015 x86_64 x86_64 x86_64 GNU/Linux

```

run-level 3 Jun 21 17:16

```

SPEC is set to: /root/cpu2006-1.2
Filesystem      Type  Size  Used Avail Use% Mounted on
/dev/sda2        xfs   226G  12G  215G   5% /

```

Additional information from dmidecode:

Warning: Use caution when you interpret this section. The 'dmidecode' program reads system data which is "intended to allow hardware to be accurately determined", but the intent may not be met, as there are frequent changes to hardware, firmware, and the "DMTF SMBIOS" standard.

BIOS Dell Inc. 2.2.1 06/06/2016

```

Memory:
16x 00CE00B300CE M393A4K40BB1-CRC 32 GB 2 rank 2400 MHz
8x Not Specified Not Specified

```

Continued on next page



SPEC CINT2006 Result

Copyright 2006-2016 Standard Performance Evaluation Corporation

Dell Inc.

SPECint2006 = 72.1

PowerEdge T630 (Intel Xeon E5-2697A v4, 2.60 GHz)

SPECint_base2006 = 68.7

CPU2006 license: 55

Test date: Jun-2016

Test sponsor: Dell Inc.

Hardware Availability: Jun-2016

Tested by: Dell Inc.

Software Availability: Mar-2016

Platform Notes (Continued)

(End of data from sysinfo program)

General Notes

Environment variables set by runspec before the start of the run:

KMP_AFFINITY = "granularity=fine,scatter"

LD_LIBRARY_PATH = "/root/cpu2006-1.2/libs/32:/root/cpu2006-1.2/libs/64:/root/cpu2006-1.2/sh"

OMP_NUM_THREADS = "32"

Binaries compiled on a system with 1x Intel Core i5-4670K CPU + 32GB memory using RedHat EL 7.1

Transparent Huge Pages enabled with:

echo always > /sys/kernel/mm/transparent_hugepage/enabled

Base Compiler Invocation

C benchmarks:

icc -m64

C++ benchmarks:

icpc -m64

Base Portability Flags

400.perlbench: -DSPEC_CPU_LP64 -DSPEC_CPU_LINUX_X64
 401.bzip2: -DSPEC_CPU_LP64
 403.gcc: -DSPEC_CPU_LP64
 429.mcf: -DSPEC_CPU_LP64
 445.gobmk: -DSPEC_CPU_LP64
 456.hmmer: -DSPEC_CPU_LP64
 458.sjeng: -DSPEC_CPU_LP64
 462.libquantum: -DSPEC_CPU_LP64 -DSPEC_CPU_LINUX
 464.h264ref: -DSPEC_CPU_LP64
 471.omnetpp: -DSPEC_CPU_LP64
 473.astar: -DSPEC_CPU_LP64
 483.xalancbmk: -DSPEC_CPU_LP64 -DSPEC_CPU_LINUX

Base Optimization Flags

C benchmarks:

-xCORE-AVX2 -ipo -O3 -no-prec-div -parallel -opt-prefetch -auto-p32

C++ benchmarks:

-xCORE-AVX2 -ipo -O3 -no-prec-div -opt-prefetch -auto-p32
-Wl,-z,muldefs -L/sh -lsmarthheap64



SPEC CINT2006 Result

Copyright 2006-2016 Standard Performance Evaluation Corporation

Dell Inc.

SPECint2006 = 72.1

PowerEdge T630 (Intel Xeon E5-2697A v4, 2.60 GHz)

SPECint_base2006 = 68.7

CPU2006 license: 55

Test date: Jun-2016

Test sponsor: Dell Inc.

Hardware Availability: Jun-2016

Tested by: Dell Inc.

Software Availability: Mar-2016

Base Other Flags

C benchmarks:

403.gcc: -Dalloca=_alloca

Peak Compiler Invocation

C benchmarks (except as noted below):

icc -m64

400.perlbench: icc -m32 -L/opt/intel/compilers_and_libraries_2016/linux/compiler/lib/ia32_lin

445.gobmk: icc -m32 -L/opt/intel/compilers_and_libraries_2016/linux/compiler/lib/ia32_lin

C++ benchmarks (except as noted below):

icpc -m32 -L/opt/intel/compilers_and_libraries_2016/linux/compiler/lib/ia32_lin

473.astar: icpc -m64

Peak Portability Flags

400.perlbench: -D_FILE_OFFSET_BITS=64 -DSPEC_CPU_LINUX_IA32

401.bzip2: -DSPEC_CPU_LP64

403.gcc: -DSPEC_CPU_LP64

429.mcf: -DSPEC_CPU_LP64

445.gobmk: -D_FILE_OFFSET_BITS=64

456.hmmmer: -DSPEC_CPU_LP64

458.sjeng: -DSPEC_CPU_LP64

462.libquantum: -DSPEC_CPU_LP64 -DSPEC_CPU_LINUX

464.h264ref: -DSPEC_CPU_LP64

471.omnetpp: -D_FILE_OFFSET_BITS=64

473.astar: -DSPEC_CPU_LP64

483.xalancbmk: -D_FILE_OFFSET_BITS=64 -DSPEC_CPU_LINUX

Peak Optimization Flags

C benchmarks:

400.perlbench: -xCORE-AVX2(pass 2) -prof-gen:threadsafe(pass 1)
-ipo(pass 2) -O3(pass 2) -no-prec-div(pass 2)
-par-num-threads=1(pass 1) -prof-use(pass 2) -opt-prefetch
-ansi-alias

401.bzip2: -xCORE-AVX2(pass 2) -prof-gen:threadsafe(pass 1)
-ipo(pass 2) -O3(pass 2) -no-prec-div
-par-num-threads=1(pass 1) -prof-use(pass 2) -auto-ilp32

Continued on next page



SPEC CINT2006 Result

Copyright 2006-2016 Standard Performance Evaluation Corporation

Dell Inc.

SPECint2006 = 72.1

PowerEdge T630 (Intel Xeon E5-2697A v4, 2.60 GHz)

SPECint_base2006 = 68.7

CPU2006 license: 55

Test date: Jun-2016

Test sponsor: Dell Inc.

Hardware Availability: Jun-2016

Tested by: Dell Inc.

Software Availability: Mar-2016

Peak Optimization Flags (Continued)

401.bzip2 (continued):

-opt-prefetch -ansi-alias

403.gcc: -xCORE-AVX2 -ipo -O3 -no-prec-div -inline-calloc

-opt-malloc-options=3 -auto-ilp32

429.mcf: -xCORE-AVX2 -ipo -O3 -no-prec-div -parallel

-opt-prefetch -auto-p32

445.gobmk: -xCORE-AVX2(pass 2) -prof-gen:threadsafe(pass 1)

-prof-use(pass 2) -par-num-threads=1(pass 1) -ansi-alias

456.hmmcr: basepeak = yes

458.sjeng: -xCORE-AVX2(pass 2) -prof-gen:threadsafe(pass 1)

-ipo(pass 2) -O3(pass 2) -no-prec-div(pass 2)
-par-num-threads=1(pass 1) -prof-use(pass 2) -unroll4

462.libquantum: basepeak = yes

464.h264ref: basepeak = yes

C++ benchmarks:

471.omnetpp: -xCORE-AVX2(pass 2) -prof-gen:threadsafe(pass 1)

-ipo(pass 2) -O3(pass 2) -no-prec-div(pass 2)
-par-num-threads=1(pass 1) -prof-use(pass 2)
-opt-ra-region-strategy=block -ansi-alias
-Wl,-z,muldefs -L/sh -lsmartheap

473.astar: -xCORE-AVX2 -ipo -O3 -no-prec-div -opt-prefetch

-auto-p32 -Wl,-z,muldefs -L/sh -lsmartheap64

483.xalancbmk: -xCORE-AVX2 -ipo -O3 -no-prec-div -opt-prefetch

-ansi-alias -Wl,-z,muldefs -L/sh -lsmartheap

Peak Other Flags

C benchmarks:

403.gcc: -Dalloca=_alloca

The flags files that were used to format this result can be browsed at

<http://www.spec.org/cpu2006/flags/Intel-ic16.0-official-linux64.html>

<http://www.spec.org/cpu2006/flags/Dell-Platform-Settings-V1.2-revD.20151006.html>



SPEC CINT2006 Result

Copyright 2006-2016 Standard Performance Evaluation Corporation

Dell Inc.

SPECint2006 = 72.1

PowerEdge T630 (Intel Xeon E5-2697A v4, 2.60 GHz)

SPECint_base2006 = 68.7

CPU2006 license: 55

Test date: Jun-2016

Test sponsor: Dell Inc.

Hardware Availability: Jun-2016

Tested by: Dell Inc.

Software Availability: Mar-2016

You can also download the XML flags sources by saving the following links:

<http://www.spec.org/cpu2006/flags/Intel-ic16.0-official-linux64.xml>

<http://www.spec.org/cpu2006/flags/Dell-Platform-Settings-V1.2-revD.20151006.xml>

SPEC and SPECint are registered trademarks of the Standard Performance Evaluation Corporation. All other brand and product names appearing in this result are trademarks or registered trademarks of their respective holders.

For questions about this result, please contact the tester.
For other inquiries, please contact webmaster@spec.org.

Tested with SPEC CPU2006 v1.2.
Report generated on Thu Nov 10 19:02:54 2016 by SPEC CPU2006 PS/PDF formatter v6932.
Originally published on 20 September 2016.