



SPEC® CINT2006 Result

Copyright 2006-2015 Standard Performance Evaluation Corporation

Huawei

SPECint®2006 = **66.9**

Huawei XH620 V3 (Intel Xeon E5-2698 v3)

SPECint_base2006 = **64.5**

CPU2006 license: 3175

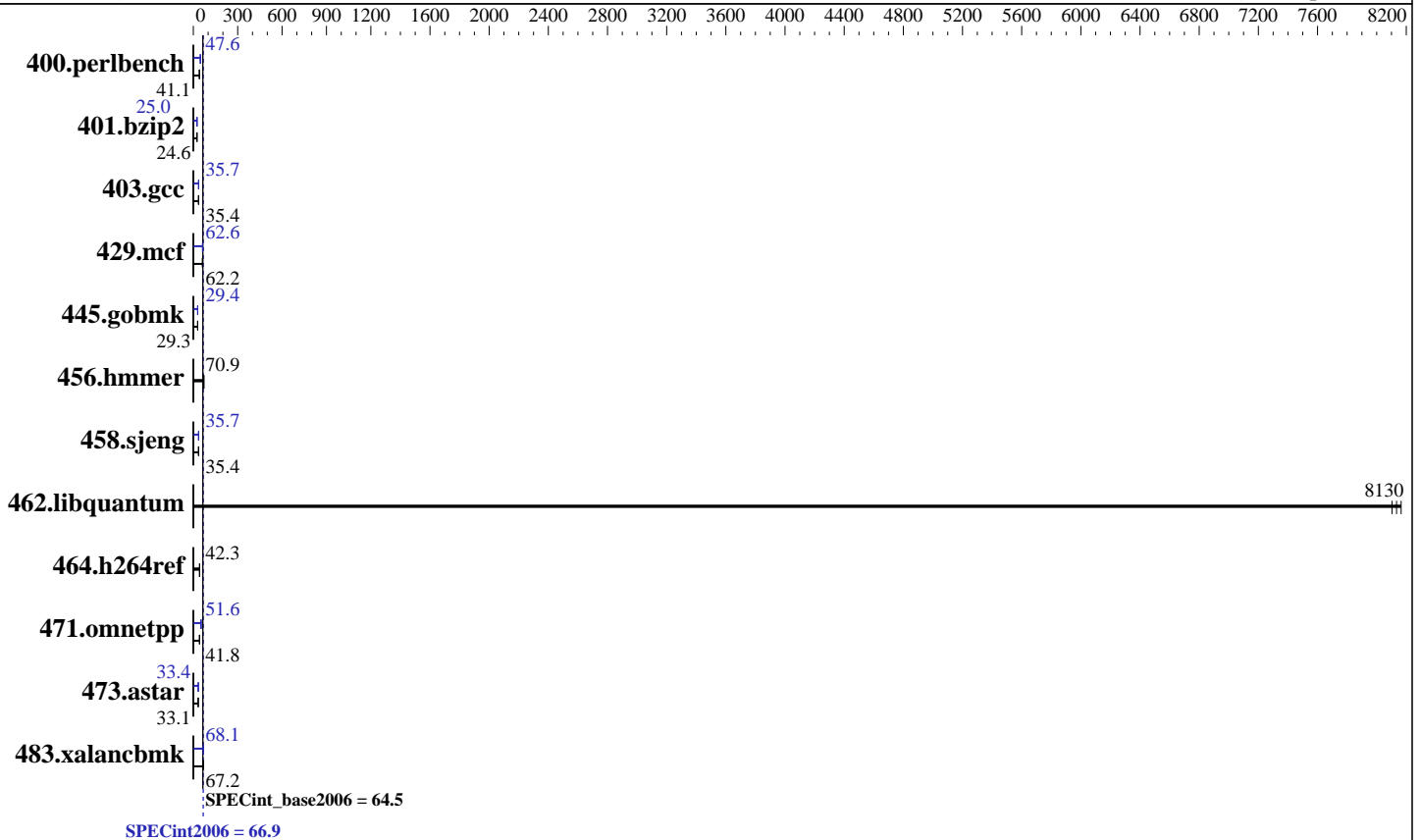
Test sponsor: Huawei

Tested by: Huawei

Test date: May-2015

Hardware Availability: Sep-2014

Software Availability: Sep-2014



Hardware

CPU Name: Intel Xeon E5-2698 v3
 CPU Characteristics: Intel Turbo Boost Technology up to 3.60 GHz
 CPU MHz: 2300
 FPU: Integrated
 CPU(s) enabled: 32 cores, 2 chips, 16 cores/chip
 CPU(s) orderable: 1,2 chip
 Primary Cache: 32 KB I + 32 KB D on chip per core
 Secondary Cache: 256 KB I+D on chip per core
 L3 Cache: 40 MB I+D on chip per chip
 Other Cache: None
 Memory: 256 GB (16 x 16 GB 2Rx4 PC4-2133P-R)
 Disk Subsystem: 1 x 500 GB SATA, 7200 RPM
 Other Hardware: None

Software

Operating System: Red Hat Enterprise Linux Server release 7.0 (Maipo)
 3.10.0-123.el7.x86_64
 Compiler: C/C++: Version 15.0.0.090 of Intel C++ Studio XE for Linux
 Auto Parallel: Yes
 File System: ext4
 System State: Run level 3 (multi-user)
 Base Pointers: 32/64-bit
 Peak Pointers: 32/64-bit
 Other Software: Microquill SmartHeap V10.0



SPEC CINT2006 Result

Copyright 2006-2015 Standard Performance Evaluation Corporation

Huawei

SPECint2006 = 66.9

Huawei XH620 V3 (Intel Xeon E5-2698 v3)

SPECint_base2006 = 64.5

CPU2006 license: 3175
Test sponsor: Huawei
Tested by: Huawei

Test date: May-2015
Hardware Availability: Sep-2014
Software Availability: Sep-2014

Results Table

Benchmark	Base						Peak					
	Seconds	Ratio	Seconds	Ratio	Seconds	Ratio	Seconds	Ratio	Seconds	Ratio	Seconds	Ratio
400.perlbench	<u>238</u>	<u>41.1</u>	238	41.1	238	41.0	206	47.5	<u>205</u>	<u>47.6</u>	205	47.6
401.bzip2	394	24.5	<u>392</u>	<u>24.6</u>	390	24.8	386	25.0	<u>386</u>	<u>25.0</u>	386	25.0
403.gcc	227	35.5	228	35.4	<u>227</u>	<u>35.4</u>	226	35.7	<u>226</u>	<u>35.7</u>	225	35.8
429.mcf	147	62.2	147	61.9	<u>147</u>	<u>62.2</u>	146	62.4	146	62.6	<u>146</u>	<u>62.6</u>
445.gobmk	<u>359</u>	<u>29.3</u>	358	29.3	359	29.2	357	29.4	<u>357</u>	<u>29.4</u>	357	29.4
456.hammer	132	70.8	132	70.9	<u>132</u>	<u>70.9</u>	132	70.8	132	70.9	<u>132</u>	<u>70.9</u>
458.sjeng	342	35.4	341	35.4	<u>342</u>	<u>35.4</u>	339	35.7	<u>339</u>	<u>35.7</u>	339	35.7
462.libquantum	<u>2.55</u>	<u>8130</u>	2.56	8100	2.54	8170	<u>2.55</u>	<u>8130</u>	2.56	8100	2.54	8170
464.h264ref	<u>523</u>	<u>42.3</u>	522	42.4	523	42.3	<u>523</u>	<u>42.3</u>	522	42.4	523	42.3
471.omnetpp	<u>150</u>	<u>41.8</u>	148	42.3	150	41.7	<u>121</u>	<u>51.6</u>	122	51.4	116	53.8
473.astar	212	33.1	214	32.8	<u>212</u>	<u>33.1</u>	210	33.5	211	33.3	<u>210</u>	<u>33.4</u>
483.xalancbmk	102	67.4	103	67.0	<u>103</u>	<u>67.2</u>	101	68.2	101	68.0	<u>101</u>	<u>68.1</u>

Results appear in the order in which they were run. Bold underlined text indicates a median measurement.

Submit Notes

The config file option 'submit' was used.

Operating System Notes

Stack size set to unlimited using "ulimit -s unlimited"

Platform Notes

BIOS configuration:
Set Power Efficiency Mode to Custom
Set Snoop Mode to ES mode
Set Patrol Scrub to Disable
Set Intel HT Technology to Disable
Sysinfo program /spec15/config/sysinfo.rev6914
\$Rev: 6914 \$ \$Date:: 2014-06-25 #\$ e3fbb8667b5a285932ceab81e28219e1
running on localhost.localdomain Wed May 13 12:44:53 2015

This section contains SUT (System Under Test) info as seen by some common utilities. To remove or add to this section, see: <http://www.spec.org/cpu2006/Docs/config.html#sysinfo>

From /proc/cpuinfo
model name : Intel(R) Xeon(R) CPU E5-2698 v3 @ 2.30GHz
2 "physical id"s (chips)
32 "processors"
cores, siblings (Caution: counting these is hw and system dependent. The following excerpts from /proc/cpuinfo might not be reliable. Use with
Continued on next page



SPEC CINT2006 Result

Copyright 2006-2015 Standard Performance Evaluation Corporation

Huawei	SPECint2006 =	66.9
Huawei XH620 V3 (Intel Xeon E5-2698 v3)	SPECint_base2006 =	64.5

CPU2006 license: 3175	Test date: May-2015
Test sponsor: Huawei	Hardware Availability: Sep-2014
Tested by: Huawei	Software Availability: Sep-2014

Platform Notes (Continued)

```
caution.)
  cpu cores : 16
  siblings  : 16
  physical 0: cores 0 1 2 3 4 5 6 7 8 9 10 11 12 13 14 15
  physical 1: cores 0 1 2 3 4 5 6 7 8 9 10 11 12 13 14 15
  cache size : 40960 KB
```

```
From /proc/meminfo
MemTotal:      263577520 kB
HugePages_Total:      0
Hugepagesize:    2048 kB
```

```
From /etc/*release* /etc/*version*
os-release:
NAME="Red Hat Enterprise Linux Server"
VERSION="7.0 (Maipo)"
ID="rhel"
ID_LIKE="fedora"
VERSION_ID="7.0"
PRETTY_NAME="Red Hat Enterprise Linux Server 7.0 (Maipo)"
ANSI_COLOR="0;31"
CPE_NAME="cpe:/o:redhat:enterprise_linux:7.0:GA:server"
redhat-release: Red Hat Enterprise Linux Server release 7.0 (Maipo)
system-release: Red Hat Enterprise Linux Server release 7.0 (Maipo)
system-release-cpe: cpe:/o:redhat:enterprise_linux:7.0:ga:server
```

```
uname -a:
Linux localhost.localdomain 3.10.0-123.el7.x86_64 #1 SMP Mon May 5 11:16:57
EDT 2014 x86_64 x86_64 x86_64 GNU/Linux
```

run-level 3 May 13 06:37

```
SPEC is set to: /spec15
Filesystem      Type  Size  Used Avail Use% Mounted on
/dev/sdal        ext4  433G   67G  345G  17% /
```

Additional information from dmidecode:

Warning: Use caution when you interpret this section. The 'dmidecode' program reads system data which is "intended to allow hardware to be accurately determined", but the intent may not be met, as there are frequent changes to hardware, firmware, and the "DMTF SMBIOS" standard.

BIOS Insyde Corp. 1.36 04/09/2015

```
Memory:
 8x Micron 36ASF2G72PZ-2G1A2 16 GB 1 rank 2133 MHz
 8x Micron 36ASF2G72PZ-2G1A2 16 GB 2 rank 2133 MHz
```

(End of data from sysinfo program)



SPEC CINT2006 Result

Copyright 2006-2015 Standard Performance Evaluation Corporation

Huawei

SPECint2006 = 66.9

Huawei XH620 V3 (Intel Xeon E5-2698 v3)

SPECint_base2006 = 64.5

CPU2006 license: 3175

Test sponsor: Huawei

Tested by: Huawei

Test date: May-2015

Hardware Availability: Sep-2014

Software Availability: Sep-2014

General Notes

Environment variables set by runspec before the start of the run:

KMP_AFFINITY = "granularity=fine,compact,1,0"

LD_LIBRARY_PATH = "/spec15/libs/32:/spec15/libs/64:/spec15/sh"

OMP_NUM_THREADS = "32"

Binaries compiled on a system with 1x Core i5-4670K CPU + 16GB memory using RedHat EL 7.0

Transparent Huge Pages enabled with:

echo always > /sys/kernel/mm/transparent_hugepage/enabled

runspec command invoked through numactl i.e.:

numactl --interleave=all runspec <etc>

Base Compiler Invocation

C benchmarks:

icc -m64

C++ benchmarks:

icpc -m64

Base Portability Flags

400.perlbench: -DSPEC_CPU_LP64 -DSPEC_CPU_LINUX_X64

401.bzip2: -DSPEC_CPU_LP64

403.gcc: -DSPEC_CPU_LP64

429.mcf: -DSPEC_CPU_LP64

445.gobmk: -DSPEC_CPU_LP64

456.hmmer: -DSPEC_CPU_LP64

458.sjeng: -DSPEC_CPU_LP64

462.libquantum: -DSPEC_CPU_LP64 -DSPEC_CPU_LINUX

464.h264ref: -DSPEC_CPU_LP64

471.omnetpp: -DSPEC_CPU_LP64

473.astar: -DSPEC_CPU_LP64

483.xalancbmk: -DSPEC_CPU_LP64 -DSPEC_CPU_LINUX

Base Optimization Flags

C benchmarks:

-xCORE-AVX2 -ipo -O3 -no-prec-div -parallel -opt-prefetch -auto-p32

C++ benchmarks:

-xCORE-AVX2 -ipo -O3 -no-prec-div -opt-prefetch -auto-p32

-Wl,-z,muldefs -L/sh -lsmartheap64



SPEC CINT2006 Result

Copyright 2006-2015 Standard Performance Evaluation Corporation

Huawei

SPECint2006 = 66.9

Huawei XH620 V3 (Intel Xeon E5-2698 v3)

SPECint_base2006 = 64.5

CPU2006 license: 3175
Test sponsor: Huawei
Tested by: Huawei

Test date: May-2015
Hardware Availability: Sep-2014
Software Availability: Sep-2014

Base Other Flags

C benchmarks:

403.gcc: -Dalloca=_alloca

Peak Compiler Invocation

C benchmarks (except as noted below):

icc -m64

400.perlbench: icc -m32 -L/opt/intel/composer_xe_2015/lib/ia32

445.gobmk: icc -m32 -L/opt/intel/composer_xe_2015/lib/ia32

C++ benchmarks (except as noted below):

icpc -m32 -L/opt/intel/composer_xe_2015/lib/ia32

473.astar: icpc -m64

Peak Portability Flags

400.perlbench: -DSPEC_CPU_LINUX_IA32
401.bzip2: -DSPEC_CPU_LP64
403.gcc: -DSPEC_CPU_LP64
429.mcf: -DSPEC_CPU_LP64
456.hmmer: -DSPEC_CPU_LP64
458.sjeng: -DSPEC_CPU_LP64
462.libquantum: -DSPEC_CPU_LP64 -DSPEC_CPU_LINUX
464.h264ref: -DSPEC_CPU_LP64
473.astar: -DSPEC_CPU_LP64
483.xalancbmk: -DSPEC_CPU_LINUX

Peak Optimization Flags

C benchmarks:

400.perlbench: -xCORE-AVX2(pass 2) -prof-gen(pass 1) -ipo(pass 2)
-O3(pass 2) -no-prec-div(pass 2) -prof-use(pass 2)
-opt-prefetch -ansi-alias

401.bzip2: -xCORE-AVX2(pass 2) -prof-gen(pass 1) -ipo(pass 2)
-O3(pass 2) -no-prec-div -prof-use(pass 2) -auto-ilp32
-opt-prefetch -ansi-alias

Continued on next page



SPEC CINT2006 Result

Copyright 2006-2015 Standard Performance Evaluation Corporation

Huawei

SPECint2006 = 66.9

Huawei XH620 V3 (Intel Xeon E5-2698 v3)

SPECint_base2006 = 64.5

CPU2006 license: 3175

Test sponsor: Huawei

Tested by: Huawei

Test date: May-2015

Hardware Availability: Sep-2014

Software Availability: Sep-2014

Peak Optimization Flags (Continued)

403.gcc: -xCORE-AVX2 -ipo -O3 -no-prec-div -inline-calloc
-opt-malloc-options=3 -auto-ilp32

429.mcf: -xCORE-AVX2 -ipo -O3 -no-prec-div -parallel
-opt-prefetch -auto-p32

445.gobmk: -xCORE-AVX2(pass 2) -prof-gen(pass 1) -prof-use(pass 2)
-ansi-alias

456.hmmcr: basepeak = yes

458.sjeng: -xCORE-AVX2(pass 2) -prof-gen(pass 1) -ipo(pass 2)
-O3(pass 2) -no-prec-div(pass 2) -prof-use(pass 2)
-unroll4

462.libquantum: basepeak = yes

464.h264ref: basepeak = yes

C++ benchmarks:

471.omnetpp: -xCORE-AVX2(pass 2) -prof-gen(pass 1) -ipo(pass 2)
-O3(pass 2) -no-prec-div(pass 2) -prof-use(pass 2)
-opt-ra-region-strategy=block -ansi-alias
-Wl,-z,muldefs -L/sh -lsmartheap

473.astar: -xCORE-AVX2 -ipo -O3 -no-prec-div -opt-prefetch
-auto-p32 -Wl,-z,muldefs -L/sh -lsmartheap64

483.xalancbmk: -xCORE-AVX2 -ipo -O3 -no-prec-div -opt-prefetch
-ansi-alias -Wl,-z,muldefs -L/sh -lsmartheap

Peak Other Flags

C benchmarks:

403.gcc: -Dalloca=_alloca

The flags files that were used to format this result can be browsed at

<http://www.spec.org/cpu2006/flags/Intel-ic15.0-official-linux64.html>

<http://www.spec.org/cpu2006/flags/Huawei-Platform-Settings-HASWELL-V1.4.html>

You can also download the XML flags sources by saving the following links:

<http://www.spec.org/cpu2006/flags/Intel-ic15.0-official-linux64.xml>

<http://www.spec.org/cpu2006/flags/Huawei-Platform-Settings-HASWELL-V1.4.xml>



SPEC CINT2006 Result

Copyright 2006-2015 Standard Performance Evaluation Corporation

Huawei

SPECint2006 = 66.9

Huawei XH620 V3 (Intel Xeon E5-2698 v3)

SPECint_base2006 = 64.5

CPU2006 license: 3175

Test sponsor: Huawei

Tested by: Huawei

Test date: May-2015

Hardware Availability: Sep-2014

Software Availability: Sep-2014

SPEC and SPECint are registered trademarks of the Standard Performance Evaluation Corporation. All other brand and product names appearing in this result are trademarks or registered trademarks of their respective holders.

For questions about this result, please contact the tester.
For other inquiries, please contact webmaster@spec.org.

Tested with SPEC CPU2006 v1.2.
Report generated on Wed Jul 29 12:09:23 2015 by SPEC CPU2006 PS/PDF formatter v6932.
Originally published on 28 July 2015.