



SPEC® CINT2006 Result

Copyright 2006-2014 Standard Performance Evaluation Corporation

Hewlett-Packard Company

SPECint®2006 = 62.3

ProLiant DL380 Gen9
(2.50 GHz, Intel Xeon E5-2680 v3)

SPECint_base2006 = 59.8

CPU2006 license: 3

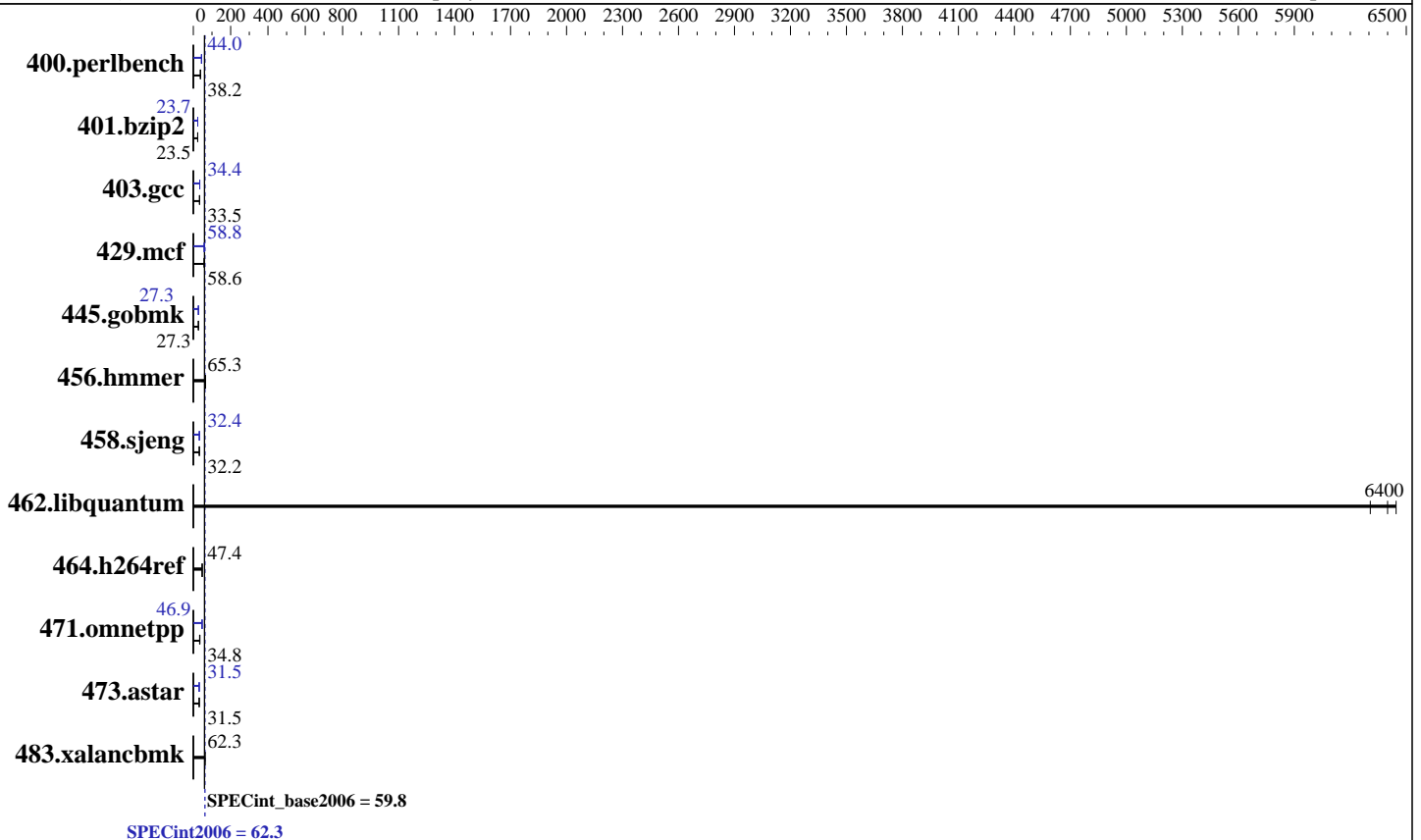
Test date: Oct-2014

Test sponsor: Hewlett-Packard Company

Hardware Availability: Sep-2014

Tested by: Hewlett-Packard Company

Software Availability: Sep-2014



Hardware

CPU Name: Intel Xeon E5-2680 v3
 CPU Characteristics: Intel Turbo Boost Technology up to 3.30 GHz
 CPU MHz: 2500
 FPU: Integrated
 CPU(s) enabled: 24 cores, 2 chips, 12 cores/chip
 CPU(s) orderable: 1,2 chip
 Primary Cache: 32 KB I + 32 KB D on chip per core
 Secondary Cache: 256 KB I+D on chip per core
 L3 Cache: 30 MB I+D on chip per chip
 Other Cache: None
 Memory: 256 GB (16 x 16 GB 2Rx4 PC4-2133P-R)
 Disk Subsystem: 1 x 400 GB SAS SSD, RAID 0
 Other Hardware: None

Software

Operating System: Red Hat Enterprise Linux Server release 7.0 (Maipo)
 Kernel 3.10.0-121.el7.x86_64
 Compiler: C/C++: Version 15.0.0.090 of Intel C++ Studio XE for Linux
 Auto Parallel: Yes
 File System: ext4
 System State: Run level 3 (multi-user)
 Base Pointers: 32/64-bit
 Peak Pointers: 32/64-bit
 Other Software: Microquill SmartHeap V10.0



SPEC CINT2006 Result

Copyright 2006-2014 Standard Performance Evaluation Corporation

Hewlett-Packard Company

SPECint2006 = **62.3**

ProLiant DL380 Gen9
(2.50 GHz, Intel Xeon E5-2680 v3)

SPECint_base2006 = **59.8**

CPU2006 license: 3
Test sponsor: Hewlett-Packard Company
Tested by: Hewlett-Packard Company

Test date: Oct-2014
Hardware Availability: Sep-2014
Software Availability: Sep-2014

Results Table

Benchmark	Base						Peak					
	Seconds	Ratio	Seconds	Ratio	Seconds	Ratio	Seconds	Ratio	Seconds	Ratio	Seconds	Ratio
400.perlbench	255	38.3	<u>256</u>	<u>38.2</u>	256	38.1	<u>222</u>	<u>44.0</u>	221	44.1	222	44.0
401.bzip2	409	23.6	412	23.4	<u>411</u>	<u>23.5</u>	408	23.7	407	23.7	<u>407</u>	<u>23.7</u>
403.gcc	240	33.5	<u>240</u>	<u>33.5</u>	242	33.3	<u>234</u>	<u>34.4</u>	234	34.4	234	34.3
429.mcf	<u>156</u>	<u>58.6</u>	157	58.2	155	58.8	155	58.9	155	58.7	<u>155</u>	<u>58.8</u>
445.gobmk	385	27.3	384	27.3	<u>384</u>	<u>27.3</u>	384	27.3	384	27.3	<u>384</u>	<u>27.3</u>
456.hammer	<u>143</u>	<u>65.3</u>	143	65.3	143	65.1	<u>143</u>	<u>65.3</u>	143	65.3	143	65.1
458.sjeng	<u>376</u>	<u>32.2</u>	376	32.2	375	32.2	374	32.4	374	32.3	<u>374</u>	<u>32.4</u>
462.libquantum	<u>3.24</u>	<u>6400</u>	3.21	6450	3.29	6310	<u>3.24</u>	<u>6400</u>	3.21	6450	3.29	6310
464.h264ref	<u>467</u>	<u>47.4</u>	467	47.4	467	47.4	<u>467</u>	<u>47.4</u>	467	47.4	467	47.4
471.omnetpp	<u>180</u>	<u>34.8</u>	186	33.6	178	35.0	<u>133</u>	<u>46.9</u>	133	46.9	133	46.9
473.astar	223	31.5	<u>223</u>	<u>31.5</u>	222	31.6	223	31.5	224	31.4	<u>223</u>	<u>31.5</u>
483.xalancbmk	110	62.5	<u>111</u>	<u>62.3</u>	111	62.2	110	62.5	<u>111</u>	<u>62.3</u>	111	62.2

Results appear in the order in which they were run. Bold underlined text indicates a median measurement.

Submit Notes

The config file option 'submit' was used.

Operating System Notes

Stack size set to unlimited using "ulimit -s unlimited"
Transparent Huge Pages enabled with:
echo always > /sys/kernel/mm/redhat_transparent_hugepage/enabled

Platform Notes

BIOS Configuration:
Intel Hyperthreading Options set to Disabled
HP Power Profile set to Custom
HP Power Regulator to HP Static High Performance Mode
Minimum Processor Idle Power Core State set to C6 State
Minimum Processor Idle Power Package State set to No Package State
QPI Snoop Configuration set to Early Snoop
Thermal Configuration set to Maximum Cooling
Collaborative Power Control set to Disabled
Processor Power and Utilization Monitoring set to Disabled
Memory Double Refresh Rate set to 1x Refresh

Sysinfo program /cpu2006/config/sysinfo.rev6914
\$Rev: 6914 \$ \$Date:: 2014-06-25 #\$ e3fbb8667b5a285932ceab81e28219e1
running on DL380-Gen9 Tue Oct 7 13:30:39 2014

This section contains SUT (System Under Test) info as seen by
Continued on next page



SPEC CINT2006 Result

Copyright 2006-2014 Standard Performance Evaluation Corporation

Hewlett-Packard Company

SPECint2006 = 62.3

ProLiant DL380 Gen9
(2.50 GHz, Intel Xeon E5-2680 v3)

SPECint_base2006 = 59.8

CPU2006 license: 3

Test date: Oct-2014

Test sponsor: Hewlett-Packard Company

Hardware Availability: Sep-2014

Tested by: Hewlett-Packard Company

Software Availability: Sep-2014

Platform Notes (Continued)

some common utilities. To remove or add to this section, see:
<http://www.spec.org/cpu2006/Docs/config.html#sysinfo>

```

From /proc/cpuinfo
  model name : Intel(R) Xeon(R) CPU E5-2680 v3 @ 2.50GHz
    2 "physical id"s (chips)
    24 "processors"
  cores, siblings (Caution: counting these is hw and system dependent. The
  following excerpts from /proc/cpuinfo might not be reliable. Use with
  caution.)
    cpu cores : 12
    siblings  : 12
    physical 0: cores 0 1 2 3 4 5 8 9 10 11 12 13
    physical 1: cores 0 1 2 3 4 5 8 9 10 11 12 13
  cache size : 30720 KB

```

```

From /proc/meminfo
MemTotal:      263845844 kB
HugePages_Total:    0
Hugepagesize:   2048 kB

```

```

From /etc/*release* /etc/*version*
os-release:
NAME="Red Hat Enterprise Linux Server"
VERSION="7.0 (Maipo)"
ID="rhel"
ID_LIKE="fedora"
VERSION_ID="7.0"
PRETTY_NAME="Red Hat Enterprise Linux Server 7.0 (Maipo)"
ANSI_COLOR="0;31"
CPE_NAME="cpe:/o:redhat:enterprise_linux:7.0:GA:server"
redhat-release: Red Hat Enterprise Linux Server release 7.0 (Maipo)
system-release: Red Hat Enterprise Linux Server release 7.0 (Maipo)
system-release-cpe: cpe:/o:redhat:enterprise_linux:7.0:ga:server

```

```

uname -a:
Linux DL380-Gen9 3.10.0-121.el7.x86_64 #1 SMP Tue Apr 8 10:48:19 EDT 2014
x86_64 x86_64 x86_64 GNU/Linux

```

run-level 3 Oct 7 13:26

```

SPEC is set to: /cpu2006
Filesystem      Type  Size  Used Avail Use% Mounted on
/dev/sda4       ext4  362G  189G  155G  55% /

```

Additional information from dmidecode:

Warning: Use caution when you interpret this section. The 'dmidecode' program reads system data which is "intended to allow hardware to be accurately determined", but the intent may not be met, as there are frequent changes to hardware, firmware, and the "DMTF SMBIOS" standard.

BIOS HP P89 07/11/2014

Continued on next page



SPEC CINT2006 Result

Copyright 2006-2014 Standard Performance Evaluation Corporation

Hewlett-Packard Company

SPECint2006 = 62.3

ProLiant DL380 Gen9
(2.50 GHz, Intel Xeon E5-2680 v3)

SPECint_base2006 = 59.8

CPU2006 license: 3

Test date: Oct-2014

Test sponsor: Hewlett-Packard Company

Hardware Availability: Sep-2014

Tested by: Hewlett-Packard Company

Software Availability: Sep-2014

Platform Notes (Continued)

Memory:

2x HP 752369-081 16 GB 2 rank 2133 MHz
14x HP NOT AVAILABLE 16 GB 2 rank 2133 MHz
8x UNKNOWN NOT AVAILABLE

(End of data from sysinfo program)

Regarding the sysinfo display about the memory installed, the correct amount of memory is 256 GB and the dmidecode description should have two lines reading as:

2x HP 752369-081 16 GB 2 rank 2133 MHz
14x HP NOT AVAILABLE 16 GB 2 rank 2133 MHz

General Notes

Environment variables set by runspec before the start of the run:

KMP_AFFINITY = "granularity=fine,scatter"
LD_LIBRARY_PATH = "/cpu2006/libs/32:/cpu2006/libs/64:/cpu2006/sh"
OMP_NUM_THREADS = "24"

Binaries compiled on a system with 1x Core i5-4670K CPU + 16GB memory using RedHat EL 7.0

Base Compiler Invocation

C benchmarks:

icc -m64

C++ benchmarks:

icpc -m64

Base Portability Flags

400.perlbench: -DSPEC_CPU_LP64 -DSPEC_CPU_LINUX_X64
401.bzip2: -DSPEC_CPU_LP64
403.gcc: -DSPEC_CPU_LP64
429.mcf: -DSPEC_CPU_LP64
445.gobmk: -DSPEC_CPU_LP64
456.hmmer: -DSPEC_CPU_LP64
458.sjeng: -DSPEC_CPU_LP64
462.libquantum: -DSPEC_CPU_LP64 -DSPEC_CPU_LINUX
464.h264ref: -DSPEC_CPU_LP64
471.omnetpp: -DSPEC_CPU_LP64
473.astar: -DSPEC_CPU_LP64
483.xalancbmk: -DSPEC_CPU_LP64 -DSPEC_CPU_LINUX



SPEC CINT2006 Result

Copyright 2006-2014 Standard Performance Evaluation Corporation

Hewlett-Packard Company

SPECint2006 = 62.3

ProLiant DL380 Gen9
(2.50 GHz, Intel Xeon E5-2680 v3)

SPECint_base2006 = 59.8

CPU2006 license: 3

Test date: Oct-2014

Test sponsor: Hewlett-Packard Company

Hardware Availability: Sep-2014

Tested by: Hewlett-Packard Company

Software Availability: Sep-2014

Base Optimization Flags

C benchmarks:

`-xCORE-AVX2 -ipo -O3 -no-prec-div -parallel -opt-prefetch -auto-p32`

C++ benchmarks:

`-xCORE-AVX2 -ipo -O3 -no-prec-div -opt-prefetch -auto-p32
-Wl,-z,muldefs -L/sh -lsmartheap64`

Base Other Flags

C benchmarks:

`403.gcc: -Dalloca=_alloca`

Peak Compiler Invocation

C benchmarks (except as noted below):

`icc -m64`

`400.perlbench: icc -m32 -L/opt/intel/composer_xe_2015/lib/ia32`

`445.gobmk: icc -m32 -L/opt/intel/composer_xe_2015/lib/ia32`

C++ benchmarks (except as noted below):

`icpc -m64`

`471.omnetpp: icpc -m32 -L/opt/intel/composer_xe_2015/lib/ia32`

Peak Portability Flags

`400.perlbench: -DSPEC_CPU_LINUX_IA32`

`401.bzip2: -DSPEC_CPU_LP64`

`403.gcc: -DSPEC_CPU_LP64`

`429.mcf: -DSPEC_CPU_LP64`

`456.hmmer: -DSPEC_CPU_LP64`

`458.sjeng: -DSPEC_CPU_LP64`

`462.libquantum: -DSPEC_CPU_LP64 -DSPEC_CPU_LINUX`

`464.h264ref: -DSPEC_CPU_LP64`

`473.astar: -DSPEC_CPU_LP64`

`483.xalancbmk: -DSPEC_CPU_LP64 -DSPEC_CPU_LINUX`



SPEC CINT2006 Result

Copyright 2006-2014 Standard Performance Evaluation Corporation

Hewlett-Packard Company

SPECint2006 = 62.3

ProLiant DL380 Gen9
(2.50 GHz, Intel Xeon E5-2680 v3)

SPECint_base2006 = 59.8

CPU2006 license: 3

Test date: Oct-2014

Test sponsor: Hewlett-Packard Company

Hardware Availability: Sep-2014

Tested by: Hewlett-Packard Company

Software Availability: Sep-2014

Peak Optimization Flags

C benchmarks:

400.perlbench: -xCORE-AVX2(pass 2) -prof-gen(pass 1) -ipo(pass 2)
-O3(pass 2) -no-prec-div(pass 2) -prof-use(pass 2)
-opt-prefetch -ansi-alias

401.bzj2: -xCORE-AVX2(pass 2) -prof-gen(pass 1) -ipo(pass 2)
-O3(pass 2) -no-prec-div -prof-use(pass 2) -auto-ilp32
-opt-prefetch -ansi-alias

403.gcc: -xCORE-AVX2 -ipo -O3 -no-prec-div -inline-calloc
-opt-malloc-options=3 -auto-ilp32

429.mcf: -xCORE-AVX2 -ipo -O3 -no-prec-div -parallel
-opt-prefetch -auto-p32

445.gobmk: -xCORE-AVX2(pass 2) -prof-gen(pass 1) -prof-use(pass 2)
-ansi-alias

456.hmmer: basepeak = yes

458.sjeng: -xCORE-AVX2(pass 2) -prof-gen(pass 1) -ipo(pass 2)
-O3(pass 2) -no-prec-div(pass 2) -prof-use(pass 2)
-unroll4

462.libquantum: basepeak = yes

464.h264ref: basepeak = yes

C++ benchmarks:

471.omnetpp: -xCORE-AVX2(pass 2) -prof-gen(pass 1) -ipo(pass 2)
-O3(pass 2) -no-prec-div(pass 2) -prof-use(pass 2)
-opt-ra-region-strategy=block -ansi-alias
-Wl,-z,muldefs -L/sh -lsmartheap

473.astar: -xCORE-AVX2 -ipo -O3 -no-prec-div -opt-prefetch
-auto-p32 -Wl,-z,muldefs -L/sh -lsmartheap64

483.xalancbmk: basepeak = yes

Peak Other Flags

C benchmarks:

403.gcc: -Dalloca=_alloca



SPEC CINT2006 Result

Copyright 2006-2014 Standard Performance Evaluation Corporation

Hewlett-Packard Company

ProLiant DL380 Gen9
(2.50 GHz, Intel Xeon E5-2680 v3)

SPECint2006 = 62.3

SPECint_base2006 = 59.8

CPU2006 license: 3

Test sponsor: Hewlett-Packard Company

Tested by: Hewlett-Packard Company

Test date: Oct-2014

Hardware Availability: Sep-2014

Software Availability: Sep-2014

The flags files that were used to format this result can be browsed at

<http://www.spec.org/cpu2006/flags/Intel-ic15.0-official-linux64.html>

<http://www.spec.org/cpu2006/flags/HP-Platform-Flags-Intel-V1.2-HSW-revE.html>

You can also download the XML flags sources by saving the following links:

<http://www.spec.org/cpu2006/flags/Intel-ic15.0-official-linux64.xml>

<http://www.spec.org/cpu2006/flags/HP-Platform-Flags-Intel-V1.2-HSW-revE.xml>

SPEC and SPECint are registered trademarks of the Standard Performance Evaluation Corporation. All other brand and product names appearing in this result are trademarks or registered trademarks of their respective holders.

For questions about this result, please contact the tester.
For other inquiries, please contact webmaster@spec.org.

Tested with SPEC CPU2006 v1.2.
Report generated on Wed Nov 5 10:24:32 2014 by SPEC CPU2006 PS/PDF formatter v6932.
Originally published on 4 November 2014.